
**User's
Manual**

Sushi Sensor

**XS770A
Wireless Vibration Sensor
Functions**

IM 01W06E01-11EN

XS770A

Wireless Vibration Sensor

Functions

IM 01W06E01-11EN 1st Edition

CONTENTS

Introduction	1
Documentation Conventions	3
1. Sushi Sensor System Overview	4
2. Engineering Flow	6
3. Installation.....	7
3.1 Precautions.....	7
3.2 Installation Procedure	7
4. Sushi Sensor App.....	9
4.1 Sushi Sensor App Installation	9
4.2 NFC Communication Procedure	10
4.3 Import Network Information	11
4.3.1 Use a Key Card.....	12
4.3.2 Use Support Server	13
5. XS770A Setting	14
5.1 XS770A Network Configuration	14
5.2 XS770A Sensor Setting	16
5.3 Measurement Axis Adjustment	19
5.4 Fieldwork	21
5.5 Gateway Redundancy Setting.....	23
5.6 Backup and Restore Setting.....	24
5.6.1 Backup Setting to PC.....	24
5.6.2 Restore Setting from PC.....	26
5.6.3 Backup Setting to Support Server	28
5.6.4 Restore Setting from Support Server	29

6.	Operation and Maintenance	30
6.1	Hardware Maintenance.....	30
6.2	Daily Inspection Using Sushi Sensor App.....	30
6.3	Self-diagnosis Data Output by XS770A.....	32
6.4	Estimated Battery Life	33
6.5	Handling a Device in the Warning Status	33
6.6	Device Replacement.....	33
6.7	Battery Replacement	35
6.7.1	Preparation	35
6.7.2	Battery Replacement	35
6.7.3	Initializing the Battery Life	36
6.7.4	Handling the Battery	37
6.8	Firmware Update.....	38
6.9	Device Storage	40
6.9.1	Change to OFF Mode	40
6.9.2	Change to ON Mode.....	41
7.	XS770A Sending Data	42
7.1	Sushi Sensor Vibration (Z-axis) Data_Type=0x10.....	42
7.2	Sushi Sensor Vibration (XYZ axes) Data_Type=0x11	43
7.3	Sushi Sensor Vibration (X-axis) Data_Type=0x12.....	43
7.4	Sushi Sensor Vibration (Y-axis) Data_Type=0x13.....	44
7.5	Health Report Information (HRI) Data_Type=0x40	44
7.6	Self-diagnosis Information (DIAG) Data_Type=0x41	45
7.7	Initialization Information Data_Type=0x42.....	46
7.8	GPS Information Data_Type=0x43	46
8.	Software	47
8.1	Use of Programs from Third Parties	47
8.2	Sushi Sensor App Software License Agreement	49
9.	General Specifications	61
9.1	Standard Specifications.....	61
9.2	Software Specifications	64
9.3	Model and Suffix Codes	65
9.4	Optional Accessories	65
9.5	Dimensions.....	66

Revision Information

Introduction

This manual describes the functions, configurations, operations, and maintenance of XS770A. Before reading this manual, read the User's Manual "IM-01W06E01-01EN".

Table 1.1 shows the documents related to this manual.

Table 1.1 **Related Document List**

Title	Document No.
General Specification XS770A Wireless Vibration Sensor	GS 01W06E01-01EN
User's manual XS770A Wireless Vibration Sensor Startup Guide	IM 01W06E01-01EN
Technical Information Sushi Sensor System Engineering Guide	TI 01W06A51-01EN
Technical Information Sushi Sensor System Key card Creation Guide	TI 01W06A51-41EN

■ Regarding This Manual

- This manual should be provided to the end user.
- The contents of this manual are subject to change without prior notice.
- All rights reserved. No part of this manual may be reproduced in any form without Yokogawa's written permission.
- Yokogawa makes no warranty of any kind with regard to this manual, including, but not limited to, implied warranty of merchantability and fitness for a particular purpose.
- If any question arises or errors are found, or if any information is missing from this manual, please inform the nearest Yokogawa sales office.
- The specifications covered by this manual are limited to those for the standard type under the specified model number break-down and do not cover custom-made instruments. When products whose suffix code or optional codes contain code "Z" and an exclusive document is attached, please read it along with this manual.
- Please note that changes in the specifications, construction, or component parts of the instrument may not immediately be reflected in this manual at the time of change, provided that postponement of revisions will not cause difficulty to the user from a functional or performance standpoint.

■ Safety, Protection, and Modification of this Product

Safety precautions related to XS770A are described in "IM 01W06E01-01EN". Please be sure to read the manual.

■ All Rights Reserved

The copyrights of the media and this manual are reserved.

No part of the manual may be transferred, sold, distributed (including delivery via a commercial PC network or the like), or registered or recorded on video tapes or other media.

■ Trademarks

- Sushi Sensor is a registered trademark or trademarks of Yokogawa Electric Corporation.
- The name, LoRa, and related logo are registered trademarks or trademarks of Semtech Corporation and/or its subsidiaries.
- All company names and brand names used in this document are registered trademarks or trademarks of respective companies.
- We do not use TM or ® mark to indicate those trademarks or registered trademarks in this document.

Documentation Conventions

■ Typographical Convention

The following typographical conventions are used throughout the user's manual.

● Conventions commonly used throughout the manuals

Character string to be entered

The characters to be entered are shown in one-byte characters as follows:

Example:

FIC100.SV=50.0

"△" mark

Indicates a space between character strings to be entered.

Example:

AL△PIC010△-SC

Character string enclosed in curly brackets ({ })

Indicates an optional character that can be omitted.

Example:

PR△TAG {△. Sheet name}

● Conventions used to show key or button operations:

Characters enclosed in square brackets ([])

Characters enclosed in square brackets show the names of buttons used during the explanation of software operation.

Example:

To execute the command, click [OK].

Characters enclosed in angled brackets (< >)

Characters enclosed in angled brackets show the title of the screen during the explanation of software operation.

Characters enclosed in double quotation marks (" ")

Characters enclosed in double quotation marks show a tab or an item of the screen during the explanation of software operation.

■ Symbols

The symbols used in the manual are described in "IM 01W06E01-01EN". Refer to the document for details.

■ Drawing Conventions

Some drawings may be partially emphasized, simplified, or omitted for the convenience of description.

Some screen images depicted in the user's manual may have different display positions or character types (e.g., the upper/lower case). Also note that some of the images contained in this user's manual are display examples.

1. Sushi Sensor System Overview

The Sushi Sensor system consists of Sushi Sensor, LoRaWAN gateway, the Application, and Sushi Sensor App. Sushi Sensor is an Industrial IoT intended for the trend monitoring of production equipment and instruments. The Application collects and utilizes the measurement values. Sushi Sensor App navigates settings and displays the status of Sushi Sensor. The Application is compatible with both a cloud-based and on-premises environments.

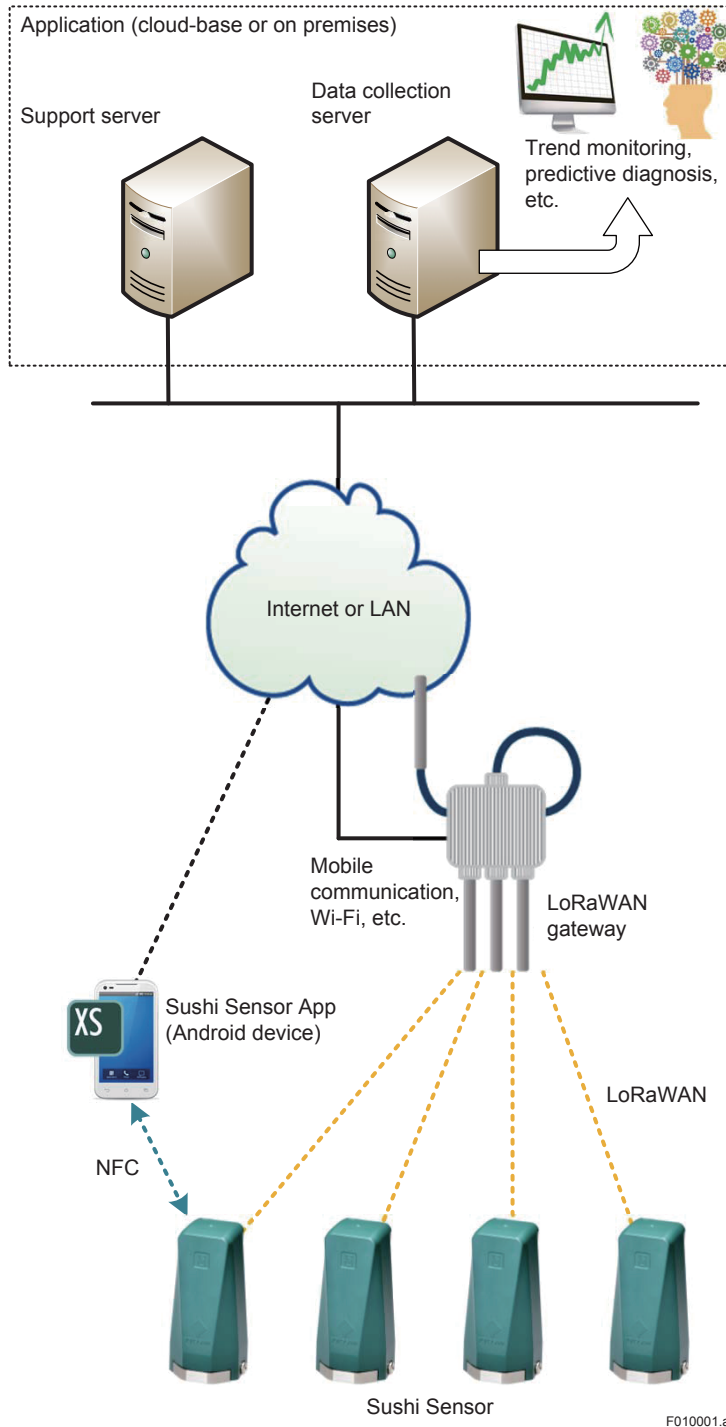


Figure 1-1 Sushi Sensor System Configuration

- **Sushi Sensor**

Sushi Sensor is a sensor for Industrial IoT, intended for trend monitoring of production equipment and instruments. This sensor adopts LoRaWAN communication which actualize long-distance communication. Setting and status check of the sensor are supported by NFC function of Android devices.

This manual explains XS770A, one of Sushi Sensor.

- **LoRaWAN gateway**

LoRaWAN gateway relays Sushi Sensor sending data to the Application and manages the LoRaWAN network.

By installing multiple units of the gateways, the communication route between Sushi sensor and the gateway can be made redundant.

- **Application**

The Application consists of Data collection server and Support server. These servers can be installed in a single hardware host.

- Data collection server

This server collects data such as measurement data and device status sent from Sushi Sensor to monitor equipment and devices online. Maintenance timing can be determined by monitoring Sushi Sensor data. Data stored in this server can be output to other applications, and can be used for trend monitoring and predictive maintenance of measurement targets.

- Support server

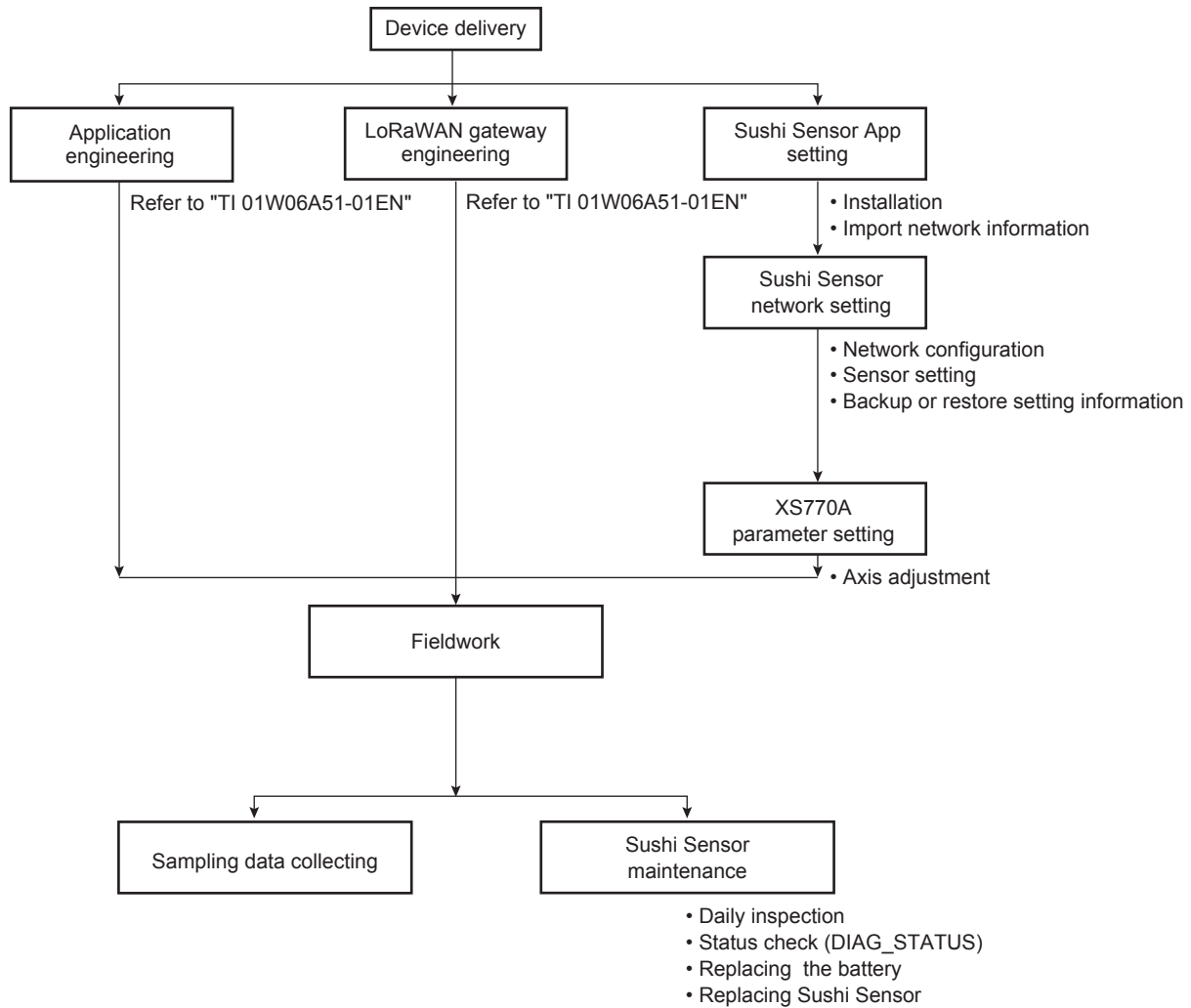
This server helps users configure and backup the network setting for Sushi Sensor by interacting with Sushi Sensor App. This server is not indispensable to operate the Sushi Sensor system.

This manual explains installation, setting, operation of XS770A and how to use of Sushi Sensor App.

For information about the LoRaWAN gateway and the Application, refer to "TI 01W06A51-01EN".

2. Engineering Flow

This section explains the engineering flow and its operations required for constructing the Sushi Sensor system.



F020001.ai

Figure 2-1 Engineering Flow for Constructing the Sushi Sensor System

Constructing the Sushi Sensor system requires the following four engineering processes.

- (1) Installation of Sushi Sensor, network configuration, and sensor setting
- (2) LoRaWAN gateway engineering
- (3) Application engineering
- (4) Start up and maintenance Sushi Sensor

This manual explains (1) Installation of XS770A. network configuration, and sensor setting, and (4) start up and maintain XS770A.



NOTE

The Default Key label included in this product package is not used for the XS770A setting. Store it with the bundled manual.

3. Installation

3.1 Precautions

- For information about ambient conditions of the installation location, refer to Section 2.4 in "IM 01W06E01-01EN".
- Make sure that there are no damages, deformations, or stains adhering the surface of the Base. Any deformations or stain may affect measurements.
- To align the X-axis or Y-axis to the desired orientation, make appropriate adjustments using Sushi Sensor App after mounting. For details, refer to Section 5.3.

3.2 Installation Procedure

XS770A can be installed using two methods: directly mounting to the measurement target by attached screw, or using the magnetic holder (F9096DA) which is an accessory of XS770A.

To install XS770A, follow the procedure described below.

1. Determine the mounting position of XS770A. Find a plain surface with diameter of 40 mm or more and the thickness of 6 mm or more.
2. Mounting this product.
 - 2a. Direct mounting of XS770A
 - 2a.1 Make a vertical installation hole (six or more screw threads at M6 P=1) in the mounting position.
 - 2a.2 Attach the provided hexagon socket set screw to the Base.
 - 2a.3 Mount XS770A to the installation hole made on the measurement target, and tighten the screw using a tool such as a 46 mm wrench. (Recommended tightening torque: 5.1 N·m)
 - 2b. Using the magnetic holder
 - 2b.1 Attach the provided hexagon socket set screw to the Base.
 - 2b.2 Attach XS770A to the magnetic holder, and tighten the screw using a tool such as a 46 mm wrench or strap wrench. (Recommended tightening torque: 5.1 N·m)
 - 2b.3 Mount XS770A to the installation surface. The magnetic holder has a strong magnetic force. Place the edge of the magnetic holder on the installation surface once, then carefully install it without moving your hand.
3. Make sure that there is no loose space in the connection surface between this sensor and the measurement target, and that no abnormal vibration occurs.
4. Tie the strap hole of this product to a structural object nearby using a string as needed.

Removing procedures are the reverse of the above.

**CAUTION**

- Tighten the screw and use proper tool for all operations, and ensure that the tool is applied to the Base (metallic part).
 - Install XS770A with extremely care not to injure your hand or finger.
 - Note that, when installing XS770A using the magnetic holder, the vibration measurement frequency band drops.
 - In case earthing of the Base (metallic part of the enclosure) is not ensured by installation, use the screw at the side of the Base for bonding the Base to the earth point or to the equipotential bonding system.
-

4. Sushi Sensor App

Sushi Sensor App communicates with XS770A via NFC and sets the following items.

- Import network information
- XS770A network configuration
- XS770A sensor setting
- Backup and restore setting
- Fieldwork

When you write XS770A sensor setting with NFC, the setting information is saved in Sushi Sensor App automatically.

4.1 Sushi Sensor App Installation

Sushi Sensor App is a tool dedicated to Android device. Install it from Google Play.

(1) Install Sushi Sensor App

(1)-1 Install "Sushi Sensor App" from the Google Play store.

(1)-2 Check that Sushi Sensor App icon is shown on the Android home screen.

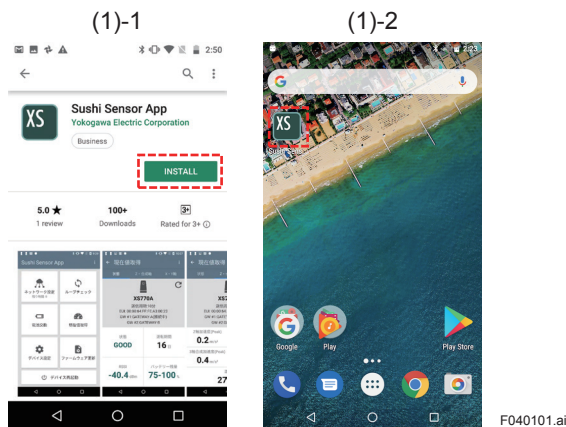


Figure 4-1 Sushi Sensor App Installation

Sushi Sensor App can be updated from Google Play manually or automatically. For details of application update, refer to the Google Play help or the manual for your Android device.

4.2 NFC Communication Procedure

This subsection explains the procedure of NFC communication between Android device and XS770A.

- (1) Check the NFC detection area of Android device and XS770A. For that of Android device, refer to the device's manual.
- (2) Follow the instructions on the Sushi Sensor App, move the NFC detection area of Android device closer to XS770A.
- (3) When NFC communication starts, Android device notifies with sounds and vibrations once. Do not move Android device and XS770A until Sushi Sensor App notifies that the communication is completed or data updating indication is disappeared.
- (4) After NFC communication is successfully completed, Android device notifies with sounds and vibrations three times.*1

*1: If NFC communication is failed, Android device notifies with sounds and vibrations twice.

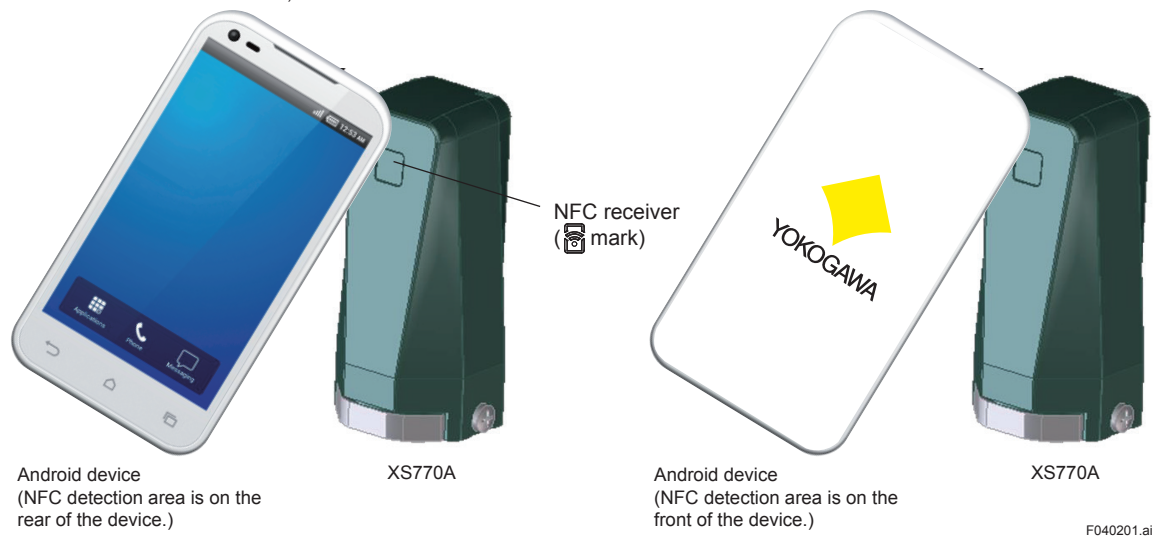


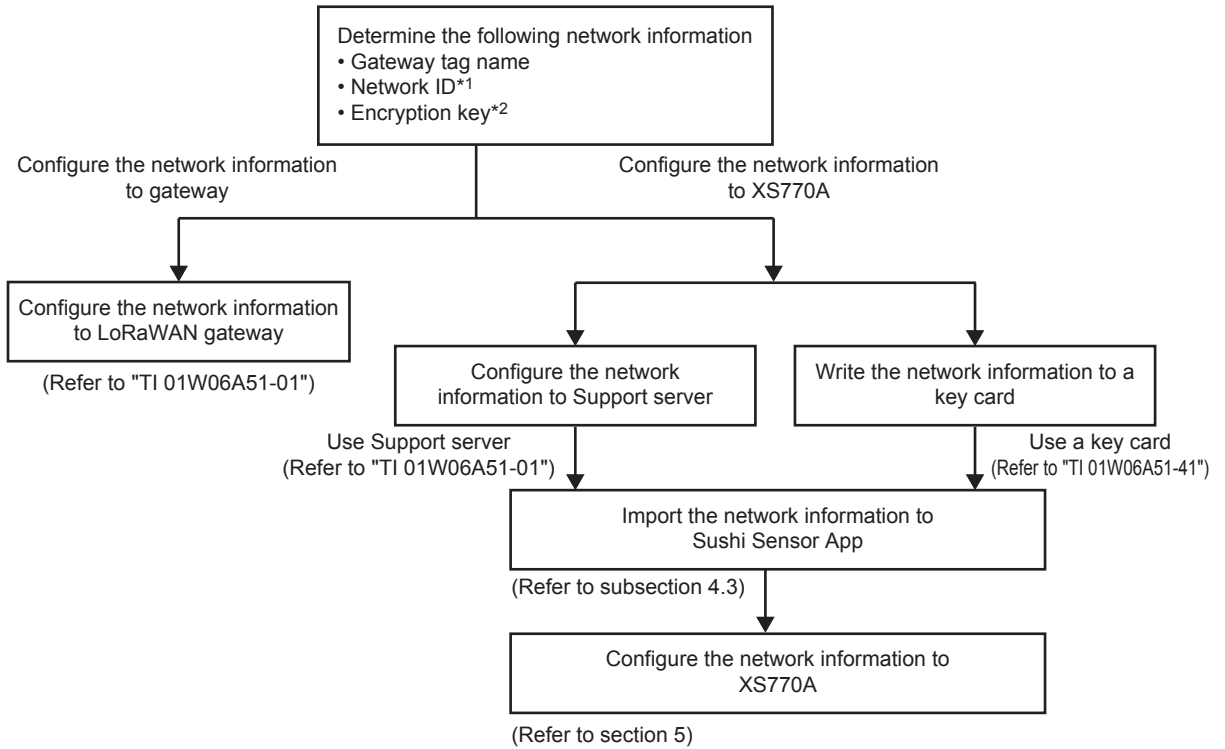
Figure 4-2 The Way of NFC Communication



Enable NFC reader/writer of Android device before using Sushi Sensor App.

4.3 Import Network Information

Network information is required for configuring network for XS770A. The same information must be specified for both of XS770A and LoRaWAN gateway to be connected. This subsection explains "Import network information to Sushi Sensor App" in Figure 4-2. "Write network information to XS770A" is explained in section 5.



*1: Network ID is defined as App EUI in LoRaWAN specification. It represents the Application identifier to which Sushi Sensor is connected.
*2: Encryption key is defined as App Key in LoRaWAN specification.

F040301.ai

Figure 4-3 Distribution of Network Information

To import network information to Sushi Sensor App, there are two ways to import the key: "Use a key card" and "Use Support server".

4.3.1 Use a Key Card

This subsection explains how to import the network information from a key card.

- (1) Select source of the network information.
 - (1)-1 On the start screen of Sushi Sensor App, press [Network Configuration] button.
 - (1)-2 Press [Use Key Card] button.

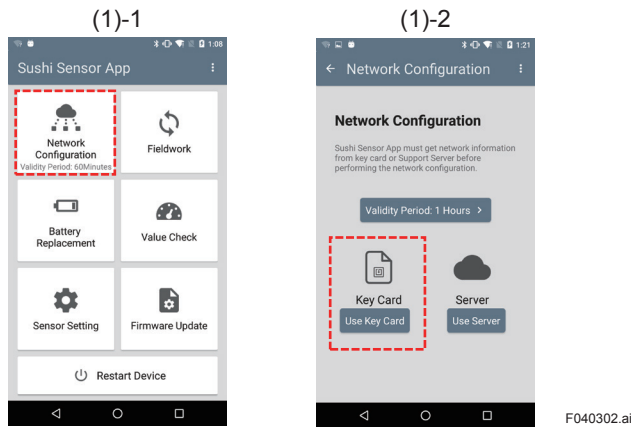


Figure 4-4 Select Key Card as Source of Network Information

- (2) Import network information
 - (2)-1 Move Android device and a key card closer. "Network info. Acquisition Completed" message appears after reading the card successfully.
 - (2)-2 Press [Done] button.

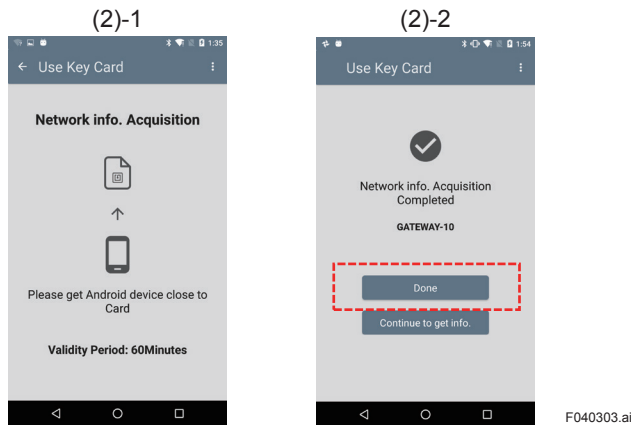


Figure 4-5 Import of Network Information Using a Key Card

4.3.2 Use Support Server

This section explains how to import network information from Support server.

- (1) Select source of the network information.
 - (1)-1 On the start screen of Sushi Sensor App, press [Network Configuration] button.
 - (1)-2 Press [Use Server] button.

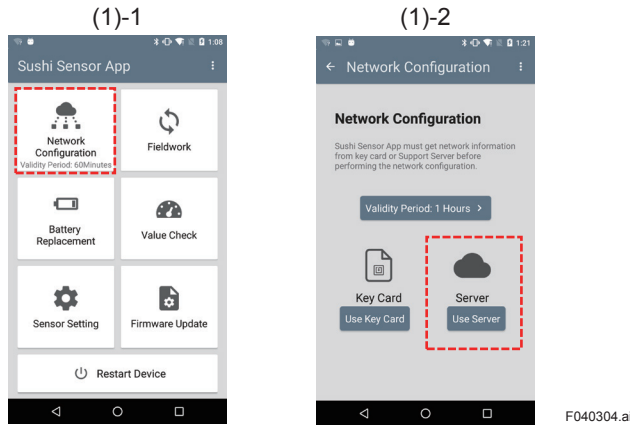


Figure 4-6 Select Support Server as Source of Network Information

- (2) Import network information
 - (2)-1 Enter the host name or IP address, user name and password of the Support server, and press the [Network info Acquisition] button. "Network info. Acquisition Completed" message appears after downloading.
 - (2)-2 Press [Done] button.

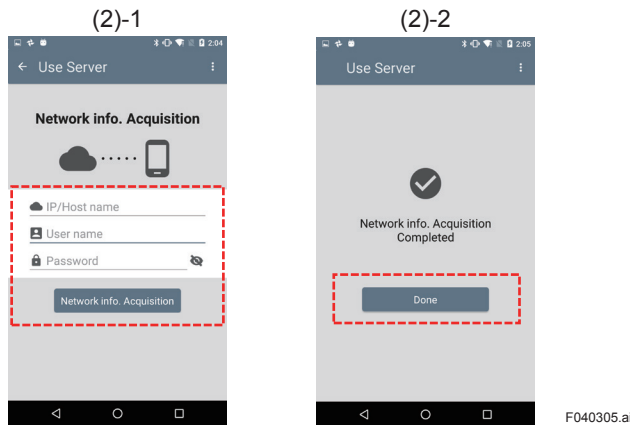


Figure 4-7 Import of Network Information Using Support Server

5. XS770A Setting

5.1 XS770A Network Configuration

Configure the network information to XS770A using Sushi Sensor App.

When [Location Information] of the Android device is set to ON, the location information (latitude and longitude) of the Android device records in XS770A.

By configuring at the actual installation point, XS770A can notify appropriate location information.

(1) Check validity period of the network information.

(1)-1 On the start screen of Sushi Sensor App, check validity period displayed on the [Network Configuration] button.

(1)-2 If validity period is not 0, press [Network Configuration] button*1.

*1: When validity period is 0, follow the procedure in Section 4.3 and import network information in Sushi Sensor App.

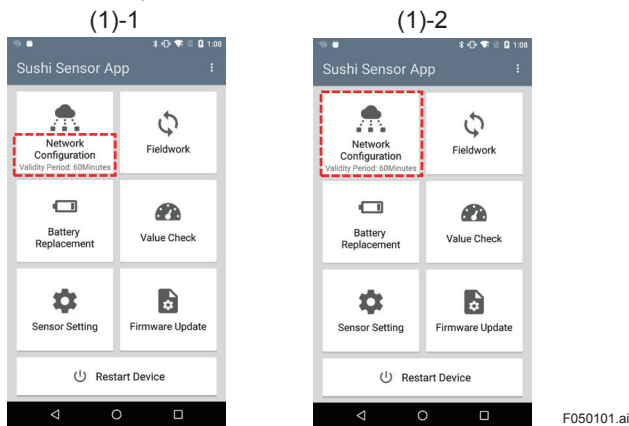


Figure 5-1 Check Validity Period

(2) Select destination gateway.

(2)-1 Press [Change] button.

List of connectable gateway tag names appears.

(2)-2 Select destination gateway tag name from the list and press [Save] button.

(2)-3 Check selected gateway tag name is shown on the screen.

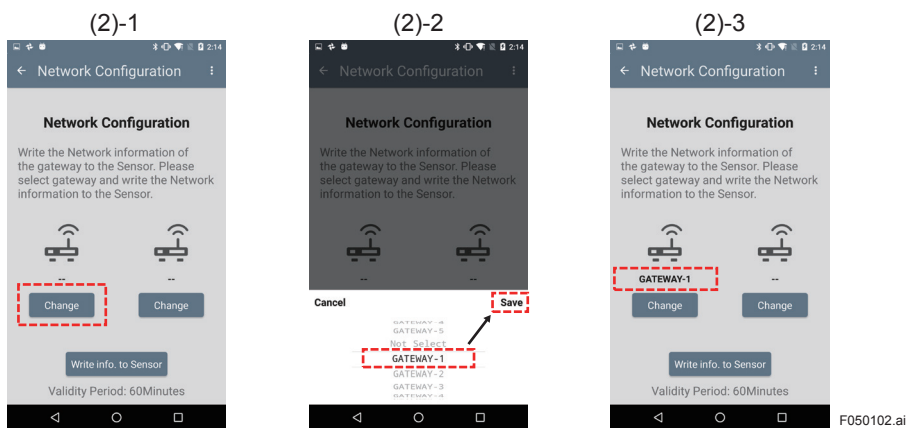


Figure 5-2 Select Destination Gateway

- (3) Write the network configuration to XS770A.
 - (3)-1 Press [Write info. to Sensor] button.
 - (3)-2 Move Android device closer to XS770A.
"Network Configuration Completed" message appears after writing the configuration.
And press[Done] button.

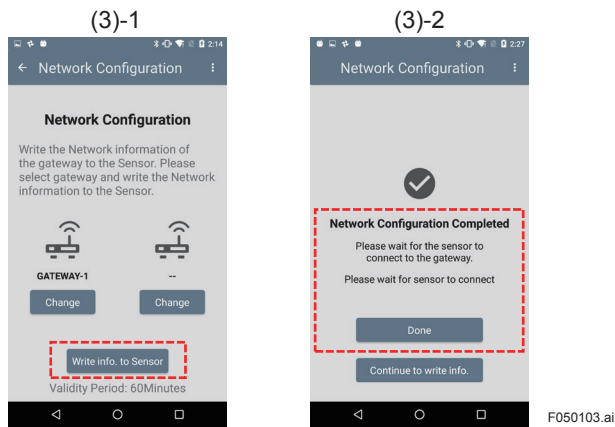


Figure 5-3 Write Network Configuration

5.2 XS770A Sensor Setting

Specify sensor tag name, sampling data, sending period and transmission mode for XS770A. Possible and default value of each item is shown below.

Table 5-1 XS770A Sensor Setting Items

Item		Description	Default	Possible Setting
General Setting	Sensor Tag Name	This is the tag name of Sushi Sensor. Setting this item is mandatory.	blank	-
	Sending Period	This is the sending cycle of sampling data.	2[Hours]	1,10,30[Minutes] 1,2,3,4,5,6,12,18,24,48,72[Hours]
Advanced Setting	Sampling Data	Z-axis & temp	This sets Z-axis and temperature data are sent or not. Number of axes to be sent is 1 because these data are put in one packet.(Refer to Section 7.1)	ON ON/OFF
		XYZ-axis & temp	This sets composite value of xyz-axis and temperature data are sent or not. Number of axes to be sent is 1 because these data are put in one packet.(Refer to Section 7.2)	OFF ON/OFF
	X-axis	This sets X-axis data are sent or not. For the packet format, refer to Section 7.3.	OFF ON/OFF	
	Y-axis	This sets Y-axis data are sent or not. For the packet format, refer to Section 7.4.	OFF ON/OFF	
	Transmission Mode	High Speed Mode	Refer to table5-2.	ON ON/OFF
Axis Adjustment	XY Angle	This specify the angle of the axis adjustment.	0	5 degrees increments in the range of -180 to 180 degrees

Table 5-2 Transmission mode

Transmission mode	Description
High Speed mode is ON	The sending period can be set from 1 minute to 72 hours. However, if number of axes to be sent is multiple, please set the transmission cycle to 10 minutes or more.
High Speed mode is OFF	The sending period can be set from 4 hours to 72 hours. There is no limit on the sending period depending on number of axes to be sent.

If you operate Sushi sensor at sending period 4 hours or less, set High Speed mode is ON.

- (1) Check Sensor list registration.
 - (1)-1 On the start screen of Sushi Sensor App, press [Sensor Setting] button.
 - (1)-2 Check sensor tag name to be changed is registered in the list.
Detail of the Sensor list, refer to Table 5-3.

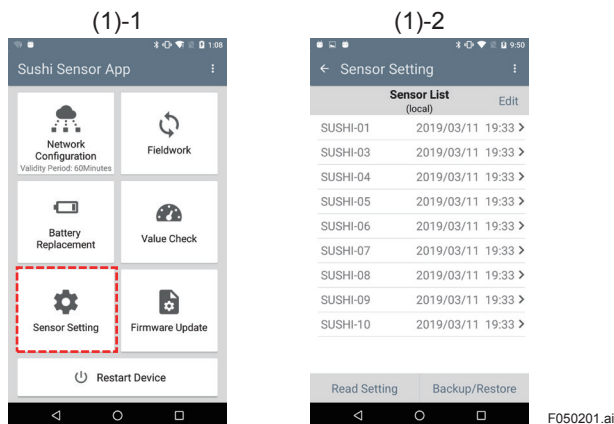


Figure 5-4 Check Sensor List Registration

(2) Display the <Sensor Setting> screen.

A:In case of the sensor is not registered in the list

(2)-A-1 Press the [Read Setting] button.

(2)-A-2 Move the Android device closer to XS770A to be changed.
<Sensor Setting> screen appears after reading successfully.

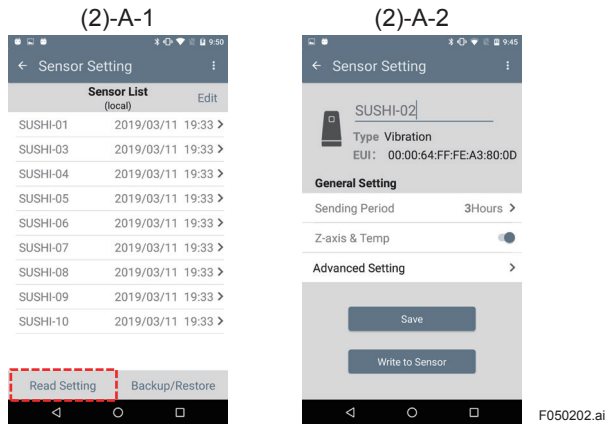


Figure 5-5 Read Sensor Setting with NFC

B:In case of the sensor has been registered in the list

(2)-B-1 Tap XS770A tag name to be changed in Sensor list.

(2)-B-2 <Sensor Setting> screen appears .

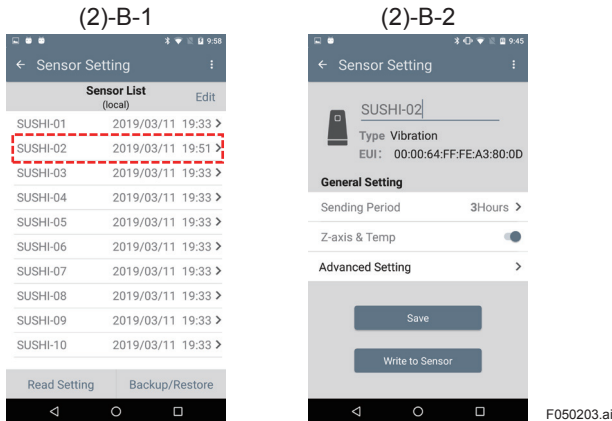


Figure 5-6 Select Sushi Sensor from List

(3) Specify the sensor setting items.

(3)-1 If Sensor tag name is blank, be sure to set it. For other items, refer to Table 5-1 and set them as necessary.

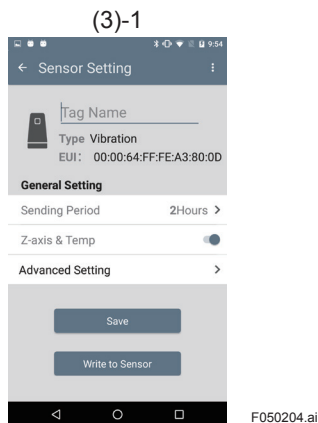


Figure 5-7 Specify the Sensor Setting Items

- (4) Write setting information to XS770A.
 - (4) -1 After the setting is completed, press the [Write to Sensor] button.
 - (4) -2 Move the Android device closer to XS770A.
"Write Sensor Setting completed" message appears after writing the setting. Press [Done] button.
 - (4) -3 Check XS770A tag name is registered in the Sensor list.

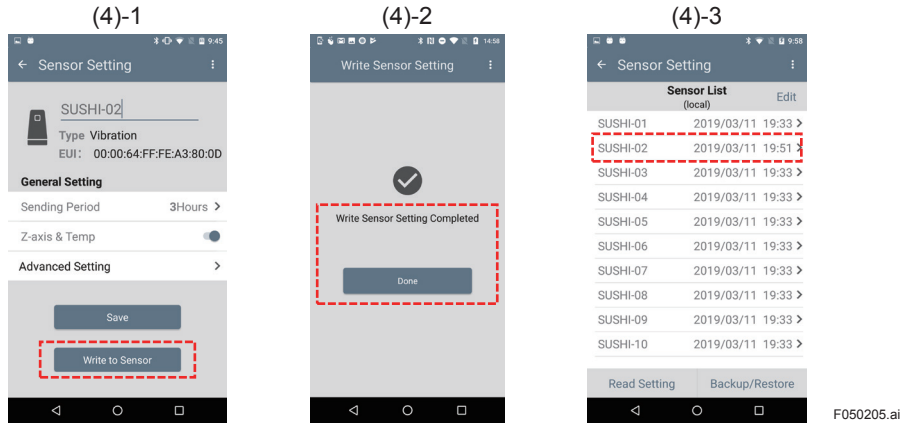


Figure 5-8 Write setting information to XS770A

Table 5-3 shows the items of <Sensor List> screen. After selecting a sensor from this list, <Sensor Setting> screen appears. The contents of <Sensor Setting> screen is shown in Table 5-4.

Table 5-3 Contents of Sensor List

Item	Description
Sensor Tag Name	Refer to Table5-1
Date	Date saved in Sushi Sensor App

Table 5-4 Contents of Sensor Setting

Item	Description	
Sensor Tag Name	Refer to Table5-1	
Sensor Type	Type of Sushi Sensor. For XS770A, type is vibration.	
EUI	Sushi Sensor EUI64	
General Setting	Sending Period	Refer to Table5-1
	Z-axis & temp	Refer to Table5-1
	Advanced Setting	Advanced Setting button. Refer to Table5-1

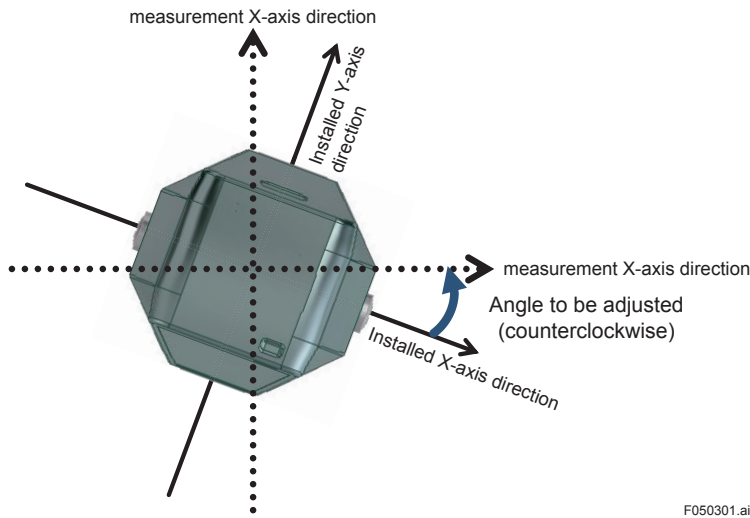
 **NOTE**

- Up to 10 characters can be set as a tag name. Upper-case alphanumeric characters (A to Z, and 0 to 9), hyphens ("-") and underscores ("_") can be used.
- The number of sending axes and its sending period affect battery life. See Section 6.4.
- Available data types are "Z-axis and temp", "XYZ axes and temp", "X-axis", and "Y-axis". Vibration measures acceleration (peak) and velocity (RMS) for each axis. XYZ axes is a composite value.
- When multiple axes data send, set sending period to 10 minutes or more. If sending period is less than 10 minutes, the data may not reach the Application.

5.3 Measurement Axis Adjustment

After installing XS770A, direction of measurement axes (X-axis and Y-axis) can be adjusted using Sushi Sensor App.

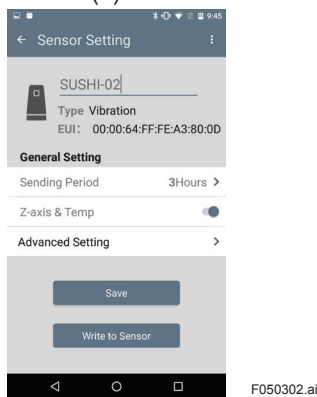
With X-axis of XS770A as the reference point, the axes can be adjusted by specifying a positive angle for counterclockwise rotation and a negative angle for clock rotation.



F050301.ai

Figure 5-9 Measurement Axis Adjustment

- (1) Display <Sensor Setting> screen of sensor to be adjusted.
 - (1)-1 Follow the procedure in Section 5.2, display <Sensor Setting> screen.
 - (1)-1



F050302.ai

Figure 5-10 Display General Setting Screen

- (2) Specify X-Y angle to be adjusted.
 - (2)-1 Press the [Advanced Setting] button.
 - (2)-2 Press the [X-Y Angle] button.
List of selectable angles appears.
 - (2)-3 Select the angle from list and press [Save] button.
For detail of the angle adjustment refer to Table 5-1.



Figure 5-11 Specify X-Y Angle

- (3) Write setting information to XS770A.
 - (3)-1 Return to <Sensor Setting> screen.
 - (3)-2 Follow the procedure in Section 5.2, write the setting to XS770A.

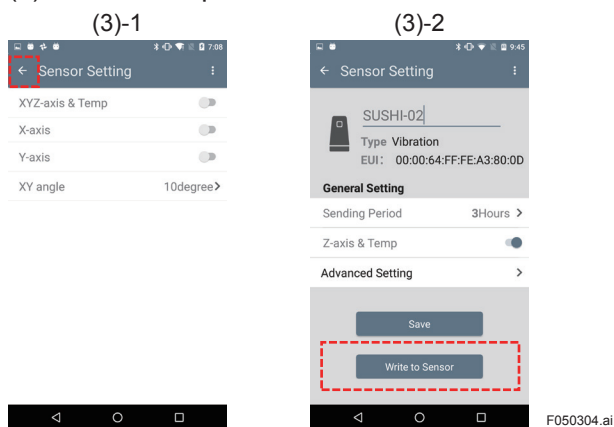


Figure 5-12 Write Adjustment to XS770A

 **NOTE**

The adjustment value is valid after writing to Sushi Sensor. The setting is applied from the next measurement timing.

5.4 Fieldwork

Fieldwork verifies that XS770A sending data reaches Data collection server and this server output values correctly.

Fieldwork is executed by using Sushi Sensor App.

- (1) Check XS770A status.
 - (1)-1 On the start screen of Sushi Sensor App, press [Fieldwork] button.
 - (1)-2 Move the Android device closer to XS770A.
Check sensor tag name and status.
When status is "GOOD", fieldwork can be executed.

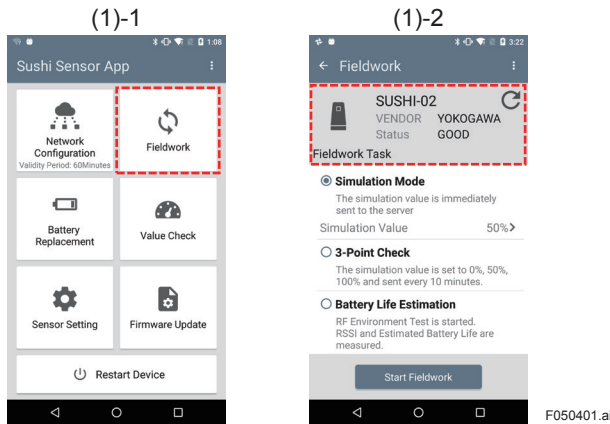


Figure 5-13 Check XS770A Status

- (2) Execute Fieldwork
 - (2)-1 Select a task and press [Start Fieldwork] button.
For details of each task, refer to Table 5-4.
 - (2)-2 Move the Android device closer to XS770A.
 - (2)-3 Press [Done] button.

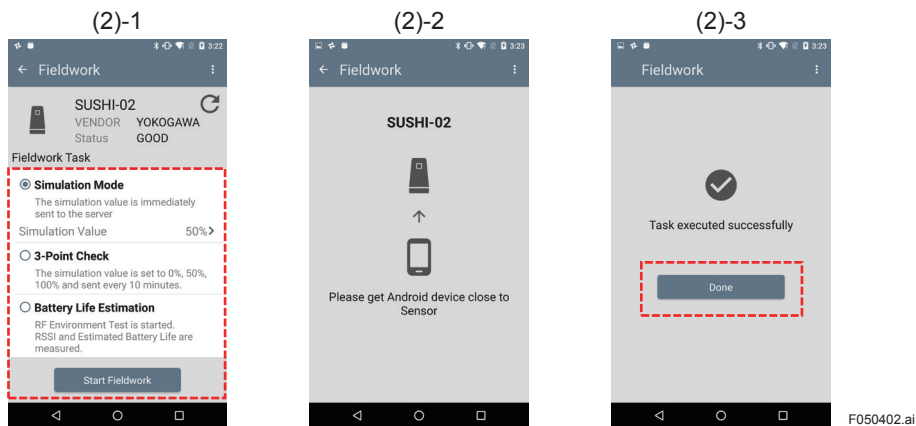


Figure 5-14 Execute Fieldwork

Fieldwork performs operations shown in Table 5-4.

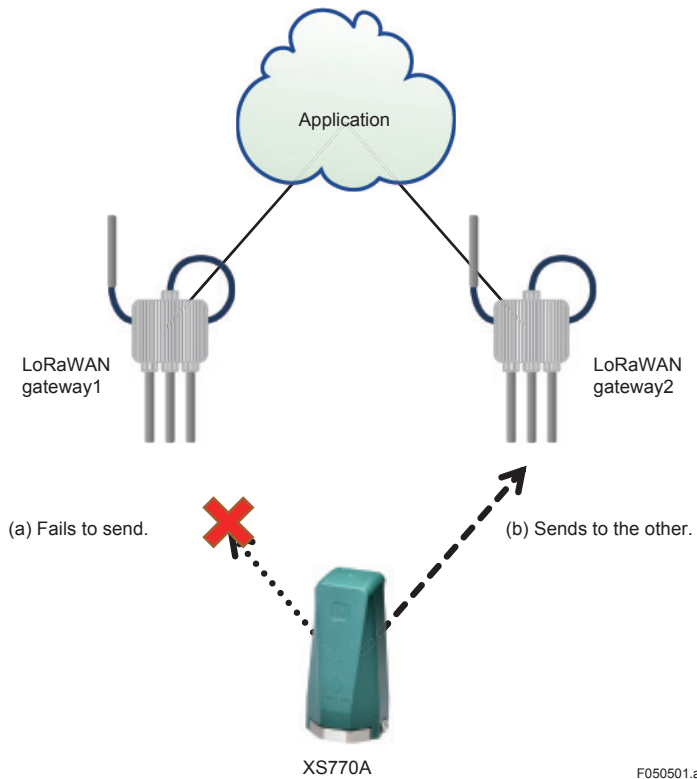
Table 5-5 **Fieldwork operation list**

Item	Description
Simulation	Sensor sends a specified value (selected from 0, 50, 75, or 100% of the measurement range) to Data collection server once. Verify that the values are correct with this server.
3-point check	Sensor sends 0, 50 and 100% of the measurement range automatically every 10 minutes. Verify that the values are correct with this server.
Battery level check	Sushi Sensor App determines the communication quality between LoRaWAN gateway and Sushi Sensor and calculates estimated XS770A battery life. Verify the battery life with Sushi Sensor App. The procedure takes about 20 seconds to get the result.

5.5 Gateway Redundancy Setting

The Sushi Sensor system supports gateway redundancy. When one gateway is out of service by failure, another gateway is used.

Registering network information of the two gateways in XS770A makes gateway redundancy. The registered XS770A automatically selects the connectable gateway and sends data.



F050501.ai

Figure 5-15 Gateway Redundancy Image

5.6 Backup and Restore Setting

XS770A setting data saved in Sushi Sensor App can be backed up or restored to/from Support server or PC.

5.6.1 Backup Setting to PC

This section describes the procedure to backup XS770A setting to PC.

- (1) Specify backup destination
 - (1)-1 On the start screen of Sushi Sensor App, press [Sensor Setting] button.
 - (1)-2 Press [Backup/Restore] button.
 - (1)-3 Press [Device] button.
 - (1)-4 <Sensor list> appears on the screen.
All the devices in this list (refer to Table5-3) are subject to backup.

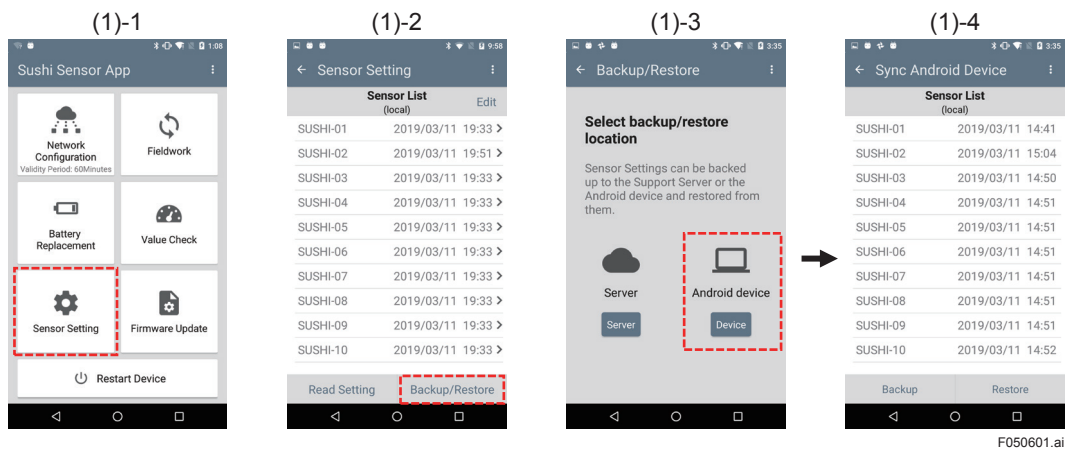


Figure 5-16 Specify Android Device as Backup Destination

- (2) Save setting of XS770A on Android Device.
 - (2)-1 Press the [Backup] button.
Data backup on the local storage is executed. After that, "Backup Completed" message with data stored path is shown.
 - (2)-2 Press [Done] button.
 - (2)-3 Restart the Android device manually.

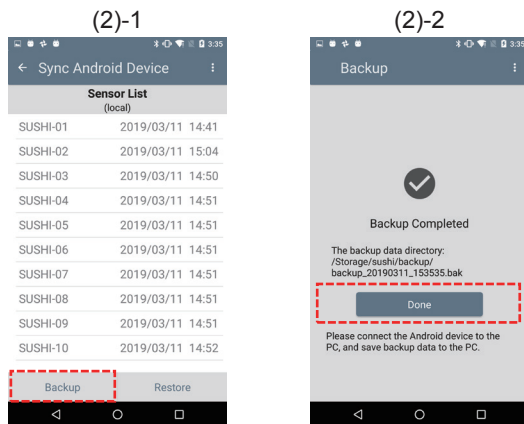


Figure 5-17 Save Setting on Android Device

 **NOTE**

After restarting the android device, you can securely access the back file from the PC.

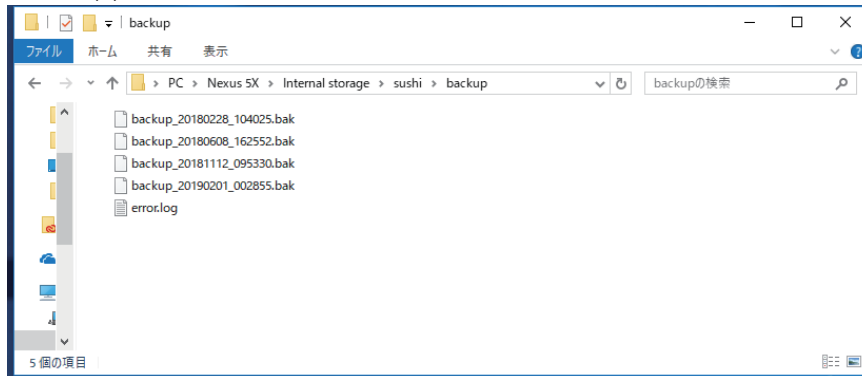
(3) Backup to PC

(3)-1 Connect Android device and PC.

(3)-2 Open "internal storage / sushi / backup" folder of the Android device.

(3)-3 Transfer the backup file (*.bak file) to PC.

(3)-2



F050603.ai

Figure 5-18 Backing up setting to PC

 **NOTE**

- Have to change USB configuration of Android device to file transfer. Tap the "Charging this device via USB" notification. Under "Use USB for," select File Transfer.
- The "internal storage / sushi / backup" folder is created automatically after saving setting of XS770A on Android device.(Section 5.6.1 (2))

Backup filenames is "backup_YYYYMMDD_HHmms.bak"

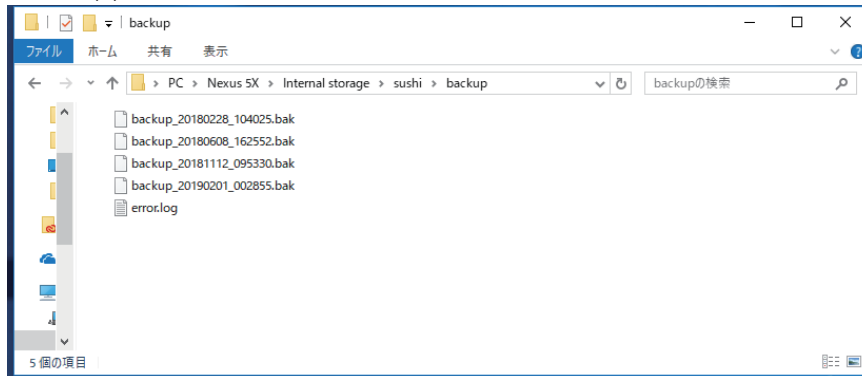
YYYYMMDD_HHmms is the timestamp of saved date. YYYY is year, MM is month, DD is day, HH is 24-hour notation, mm is minutes, and ss is second.

5.6.2 Restore Setting from PC

This section describes the procedure to restore XS770A setting from PC.

- (1) Restore backup file from PC to Android device
 - (1)-1 Connect PC and Android device.
 - (1)-2 Copy backup file (*.bak file) from PC to "internal storage / sushi / backup" folder of Android device.

(1)-2



F050604.ai

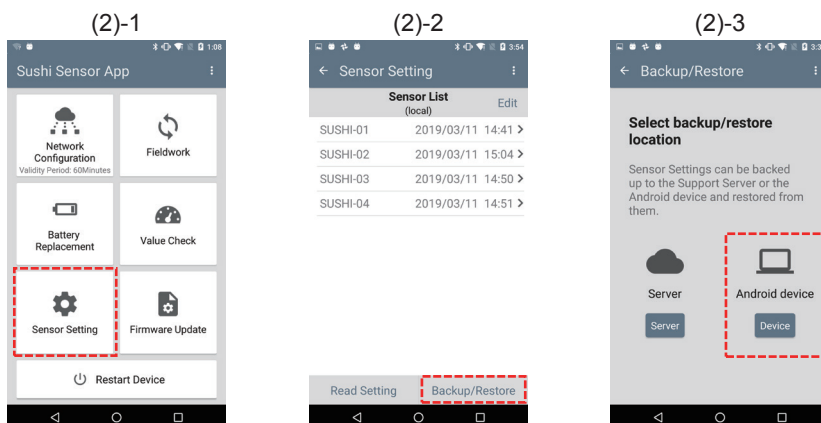
Figure 5-19 Restore Backup File From PC



NOTE

- Have to change USB configuration of Android device to file transfer. Tap the "Charging this device via USB" notification. Under "Use USB for," select File Transfer.
- The "internal storage / sushi / backup" folder of Android device is created automatically after saving setting of XS770A on Android device.(Section 5.6.1 (2))

- (2) Specify restore source.
 - (2)-1 On the start screen of Sushi Sensor App, press [Sensor Setting] button.
 - (2)-2 Press [Backup/Restore] button.
 - (2)-3 Press [Device] button.



F050605.ai

Figure 5-20 Specify Android Device as Restore Source

(3) Restore to Sushi Sensor App

(3)-1 Press [Restore] button. Sensor List (refer to Table 5-3) stored in backup file is listed on Sushi Sensor App.

(3)-2 Select XS770A to be restored from the list and press [Download] button.

(3)-3 Make sure that selected sensor tag name is shown in <Sensor List>.

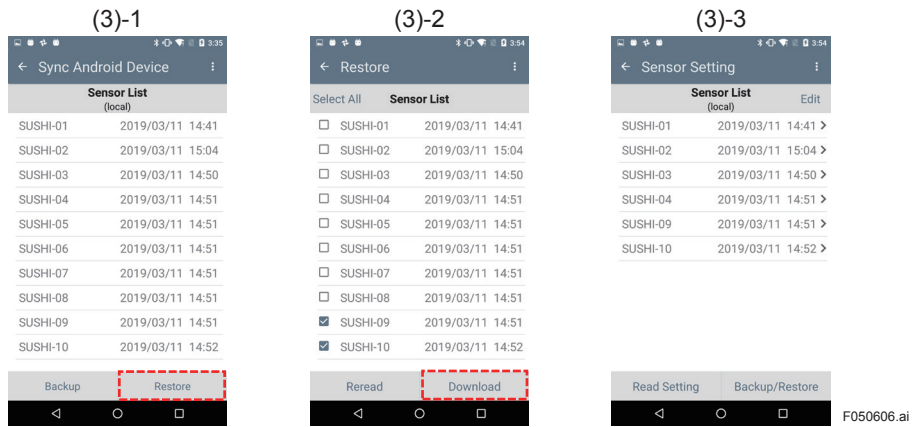
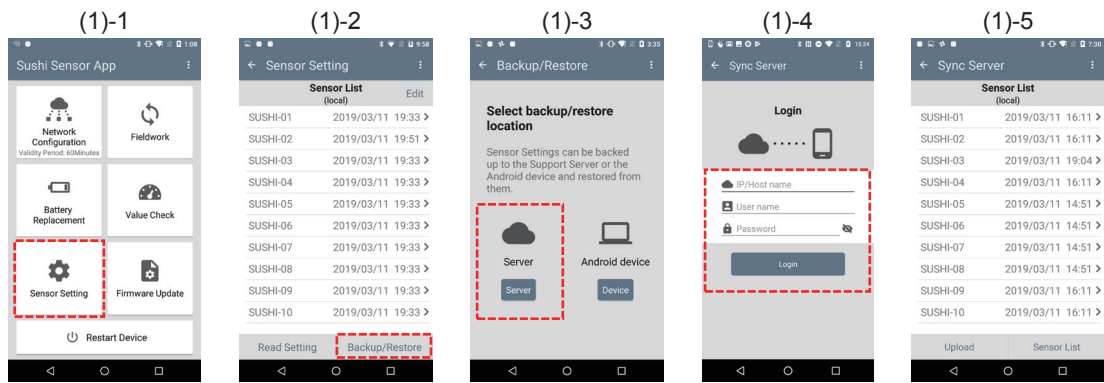


Figure 5-21 Restore Setting to Sushi Sensor App

5.6.3 Backup Setting to Support Server

This section describes the procedure to backup XS770A setting to Support server.

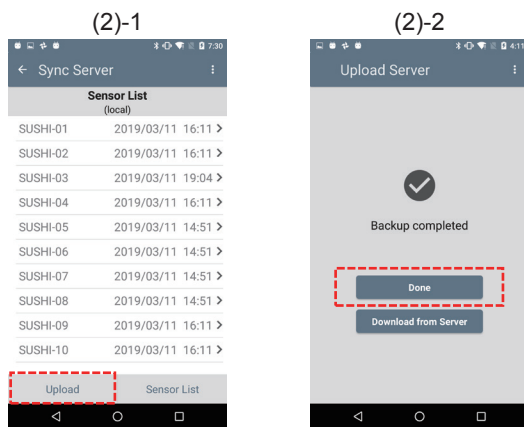
- (1) Specify backup destination
 - (1)-1 On the start screen of Sushi Sensor App, press [Sensor Setting] button.
 - (1)-2 Press [Backup/Restore] button.
 - (1)-3 Press [Server] button.
 - (1)-4 Enter the host name or IP address, user name and password of the Support server, and press the [Login] button.
 - (1)-5 <Sensor List> appears on the screen.
All the devices in this list (refer to Table5-3) are subject to backup.



F050607.ai

Figure 5-22 Specify Support Server as Backup Destination

- (2) Backup to Support server
 - (2)-1 Press the [Upload] button.
"Backup Completed" message appears after uploading backup data.
 - (2)-2 Press [Done] button.



F050608.ai

Figure 5-23 Backup Setting to Support Server

5.6.4 Restore Setting from Support Server

This section describes the procedure to restore XS770A setting from Support server.

- (1) Specify restore source.
 - (1)-1 On the start screen of Sushi Sensor App, press [Sensor Setting] button.
 - (1)-2 Press [Backup/Restore] button.
 - (1)-3 Press [Server] button.
 - (1)-4 Enter the host name or IP address, user name and password of the Support server, and press the [Login] button.

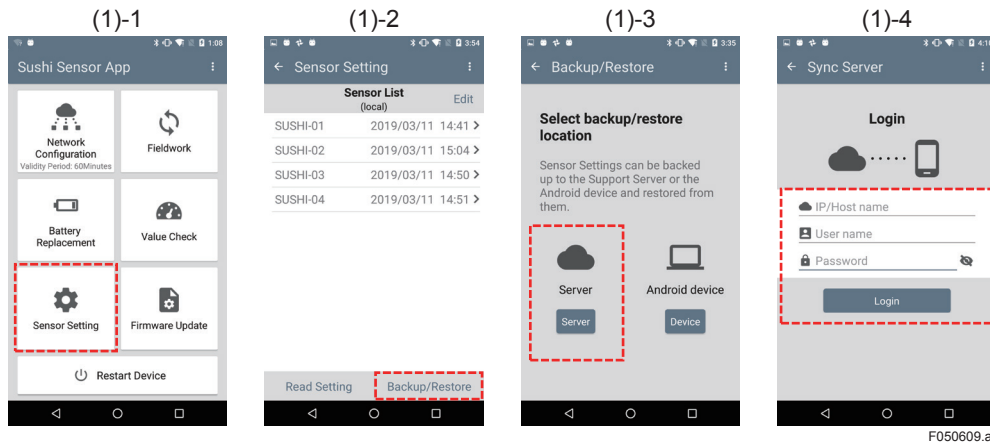


Figure 5-24 Specify Support Server as Restore Source

- (2) Restore to Sushi Sensor App
 - (2)-1 Press [Sensor List] button. Sensor List (refer to Table 5-3) is listed on Sushi Sensor App.
 - (2)-2 Select XS770A to be restored from the list and press [Download] button.
 - (2)-3 Make sure that selected sensor tag name is shown in <Sensor List>.

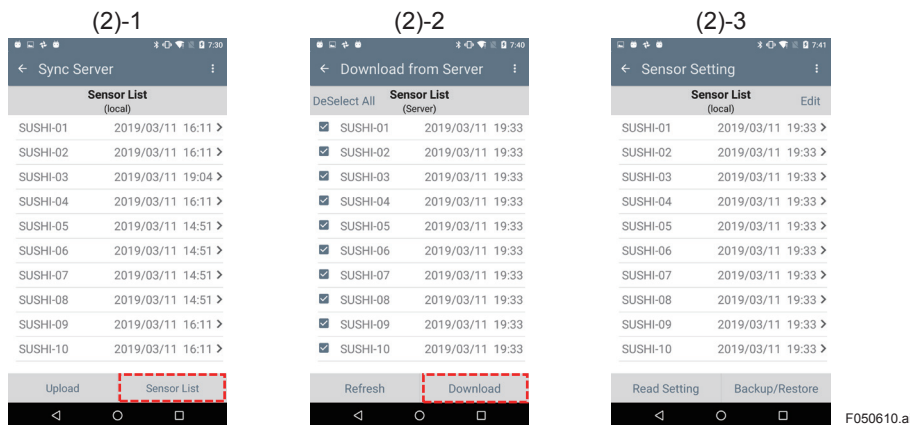


Figure 5-25 Restore Setting from Support Server

6. Operation and Maintenance

This section describes how to carry out daily inspection, a sensor indicates warning or error status, and replace battery or device of XS770A.

6.1 Hardware Maintenance

Check XS770A installation and stain condition. If XS770A becomes dirty or dusty, wipe with a soft cloth moistened with water or mild soap.

6.2 Daily Inspection Using Sushi Sensor App

This section explains the procedure of daily inspection of XS770A status by using Sushi Sensor App.

- (1) Read current status of XS770A
 - (1)-1 On the start screen of Sushi Sensor App, press [Value Check] button.
 - (1)-2 Move the Android device closer to XS770A.
<Value Check> screen appears after reading status.

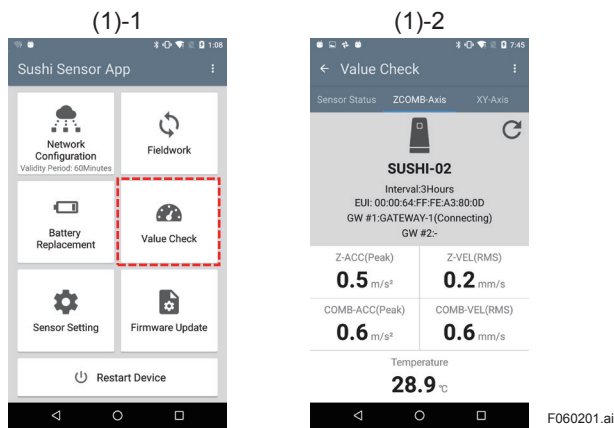


Figure 6-1 Read Current Status

(2) Check device status of XS770A

(2)-1 Click "Sensor Status" tab and check the following items.

- Check any alarms are notified in the "STATUS" area.
- Check that RSSI has not decreased significantly compared with startup.

(2)-1

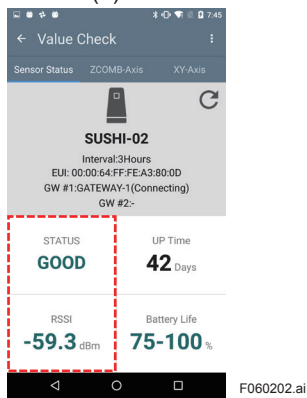


Figure 6-2 Check Device Status

For details about sensor status, refer to Table6-1.

Table 6-1 XS770A status and action strategies

Status Display	DIAG STATUS (Table7-9)	DIAG STATUS DETAIL (Table 7-10)	DATA STATUS (Table7-3)	Output Operation	Description	Action
No setting	Bit25	Bit23	-		Network are not configured for XS770A.	Configure the network for XS770A. Refer to Section 5.1.
Unconnected	Bit25	Bit22	-		XS770A is not connected to the gateway.	Check whether there is any shielding object between XS770A and the gateway, or any object that interferes with radio waves.
OFF	Bit24	Bit16	-		XS770A is in OFF mode.	Perform the procedure to change ON mode (refer to Section 6.9.2).
Low power	Bit20	Bit31	-	Normal measurement	Power is low.	Replace the battery. Refer to Section 6.7 for the battery replacement procedure.
	Bit19	Bit30	-	Normal measurement	The battery life has dropped to 25% or less.	
Temperature error	Bit22	Bit28	-	Normal measurement	CPU temperature goes outside the specified range.	The XS770A operating environment is outside the specified range. A failure may occur if you keep using it without taking corrective actions. Use it in a location with an environment that meets the relevant specifications.
		Bit29		Normal measurement		
In failure	Bit27	Bit19	-	Normal measurement	A memory error has occurred.	Replace the device. Back up the XS770A setting if necessary.
	Bit26	Bit25	Bit15	Previous value	An error has occurred during acceleration measurement.	
			Bit14	Previous value	An error has occurred during velocity measurement.	
		Bit24	Bit13	Previous value	An error has occurred during temperature measurement.	
Sim	Bit17	Bit27	Bit8	Simulation value	Task check is running for XS770A.	The simulation value is being sent. Wait until task check is completed.
Threshold error	Bit23	Bit21	Bit12	Normal measurement	The vibration value measured by XS770A is outside the measurable range.	Check the installation status of XS770A.
			Bit11	Normal measurement		
		Bit20	Bit10	Normal measurement	The temperature measured by XS770A is outside the measurable range.	
Good					XS770A is in a normal state.	None in particular

6.3 Self-diagnosis Data Output by XS770A

XS770A sends the device status to Data collection server once a day. Monitor the device status by using this server if necessary. For details of health report information (HRI) and self-diagnosis information (DIAG) refer to Section 7.

6.4 Estimated Battery Life

The XS770A battery life is affected by sending period and ambient environment. The following shows the estimated battery life of XS770A at an ambient temperature of 25±10°C. The actual battery life varies depending on the ambient temperature, temperature variation, and radio wave environment.

Table 6-2 Battery life vs. sending period and data count

Sending Period	Number of axes to be sent	Battery Life
1 day	1	10 years
1 hour	1	4 years
1 hour	4	3 years
1 minute	1	2 years

For information about sending period and number of axes to be sent, refer to Section 5.2.

6.5 Handling a Device in the Warning Status

If there is a device which indicates some warnings, a communication error may occur even if the data sending is continued. If a warning message appears due to remaining battery life of XS770A, immediately replace the battery regardless of the displayed number of days. For the replacement procedure, refer to Section 6.7.

When some warnings regarding a degradation of wireless communication are notified by monitoring Health Report Information(HRI), check whether there are any obstructions or interference sources around the communication path.

6.6 Device Replacement

The section explains the procedure to replace devices.

- (1) Prepare setting information of the XS770A to be replaced.
 - (1)-1 Follow the procedures in Section 5.2, check the XS770A to be replaced is registered in Sensor List.

(1)-1

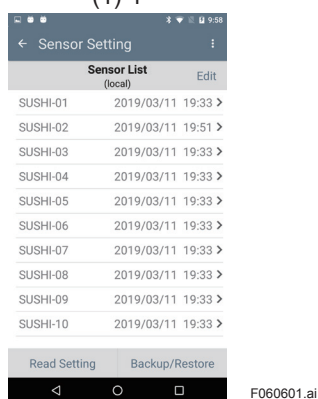


Figure 6-3 Check Sensor List

A:In case of the sensor is not registerd in the list

- (1)-A-1 Follow the procedure in Section 5.6, restore setting information the XS770A to be replaced from Support server or PC.
Display the <Sensor Setting> screen (refer to Table 5-4).

B:In case of the sensor has been registered in the list

- (1)-B-1 After selecting the sensor, <Sensor Setting> screen appears.
Display the <Sensor Setting> screen (refer to Table 5-4).

(1)-A-1, (1)-B-1

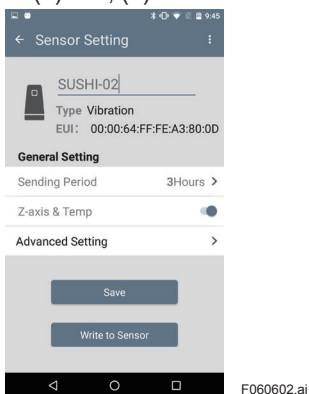


Figure 6-4 Display The General Setting Screen

(2) Write setting information to the new XS770A.

- (2)-1 Prepare a new XS770A.
 - (2)-2 Follow the procedure in Section5.2, write setting information to the new XS770A.
Warning message appears because the network ID is different, but press [Done] button.
 - (2)-3 Follow the procedure in Section5.1, configure network for the new XS770A.
- When network configuration is completed, the new XS770A connects to the gateway.

(2)-2

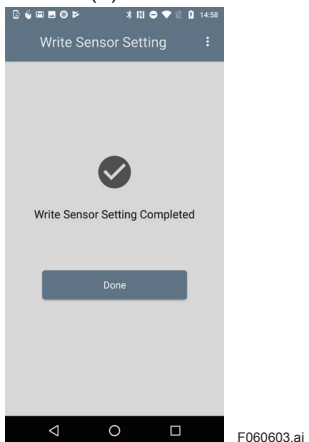


Figure 6-5 Wirte Setting to New XS770A

(3) Check the connection with gateway

(3)-1 Follow the procedure in Section 6.2, confirm status of the new XS770A.

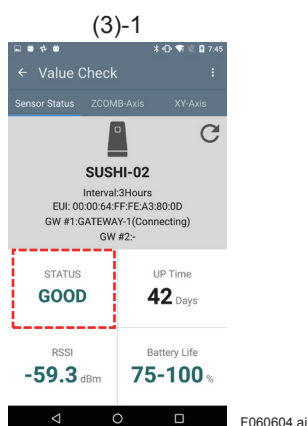


Figure 6-6 Check the Connection

6.7 Battery Replacement

6.7.1 Preparation

Only the dedicated battery specified by Yokogawa should be used with this product. When a replacement battery is needed, please order the XS70BT. The XS70BT is a set of a dedicated product (model: LS14500 C5SY) that uses a specified quantity of SAFT batteries with battery connectors attached to the batteries.

6.7.2 Battery Replacement

To replace a battery, follow the procedure described below.



IMPORTANT

- This product contains parts that can be damaged by static electricity. When replacing a battery, take precautions such as using a grounded wrist strap to avoid handling electronic parts or touching the board circuit patterns.
- When putting on or removing the Case, pay great attention to the environmental conditions in order to prevent dust and water droplets entering inside the product.
- When replacing the battery, check that the product has sufficiently cooled because the built-in battery or internal components may still be hot.
- Be extremely careful not to apply excessive force to the circuit board, hit it with a tool or allow any foreign materials or stains to adhere to it.
- Be extremely careful not to forcibly pull the cable in a way that may lead to damage or disconnection.
- Be extremely careful to ensure that no foreign materials get into or become adhered to the battery connector of the product when the battery is being removed."

- (1) Remove two M4 screws fixing the case.
- (2) Remove the Case by inserting a flathead screwdriver into the slit.
- (3) Disconnect the battery connector from the battery holder.
- (4) Remove the used battery from the battery holder.
- (5) Put a new battery into the battery holder with the negative side facing down.
- (6) Connect the battery connector to the board.

- (7) Put the case onto the base with directing the nameplate to the battery side.
- (8) Tighten the M4 screw to fix the case. (Recommended tightening torque: 1.37 N·m)
- (9) Initialize the battery life using Sushi Sensor App.

 **NOTE**

- If the battery and Case are not placed in the correct orientation, the Case will not be able to be closed.
- When attaching the cover, make sure the EUI of XS770A displayed by executing [Value Chack] in Sushi Sensor App matches EUI64 described on the nameplate.

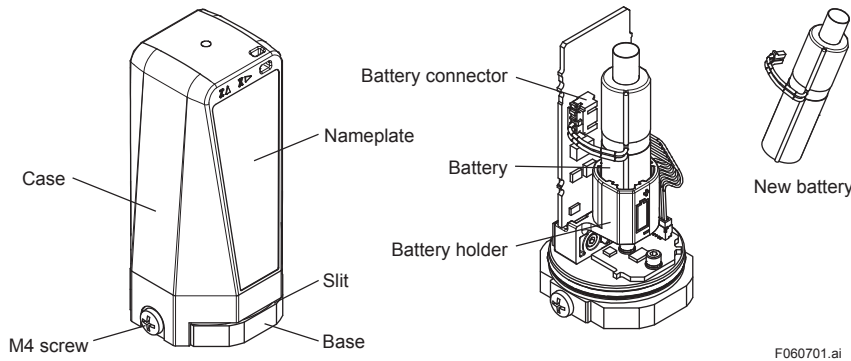


Figure 6-7 Battery Replacement Procedure

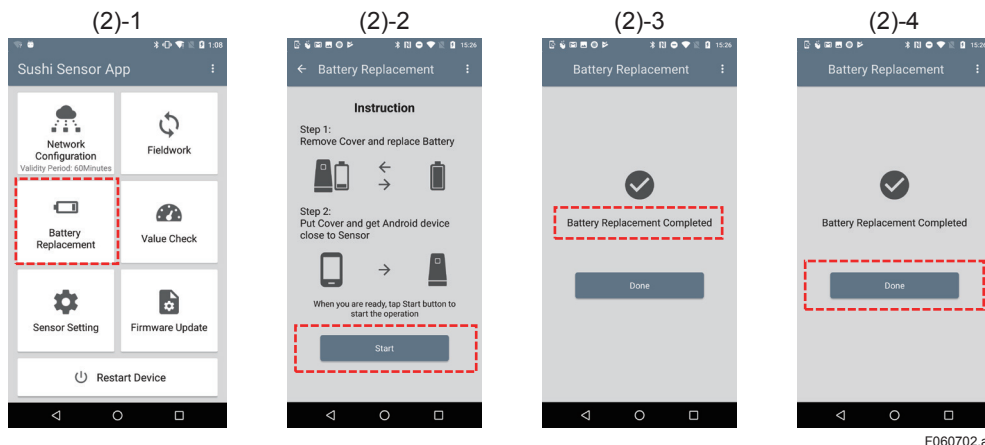
6.7.3 Initializing the Battery Life

After replacing the battery, the battery life will have to be initialized. The battery life will not be calculated correctly if it is not initialized.

The procedure for initializing the battery life using Sushi Sensor App is shown below.

- (1) Replace XS770A battery
 - (1)-1 Follow the procedure in Section 6.7.2, replace XS770A battery.

- (2) Initialize battery life.
 - (2)-1 On the start screen of Sushi Sensor App, press [Battery Replacement] button.
 - (2)-2 Press [Start] button.
 - (2)-3 Move the Android device closer to XS770A.
"Battery Replacement Completed" message appears after initializing battery life.
 - (2)-4 Press [Done] button.



F060702.ai

Figure 6-8 Initializing the Battery Life

6.7.4 Handling the Battery

This product uses one lithium thionyl chloride primary battery. The battery contains approximately 0.7 g of lithium.

Under normal conditions, the battery materials are self-contained and are not reactive as long as the battery integrity is maintained. Care should be taken to prevent thermal, electrical or mechanical damage. Battery should be stored in a clean and dry area. For maximum battery life, storage temperature should not exceed 40°C.

Use the dedicated battery shown in section 6.7.2.

 **WARNING**

Handling the battery

The following precautions must be observed in order to safely and effectively use a battery pack. Improper use may lead to fluid leakage, excessive heat, ignition, or explosion.

- Never charge it.
- Do not short-circuit it.
- Do not disassemble, transform, or modify it.
- Do not heat it or throw it into a fire.
- Do not soak it in fresh water or seawater.

 **CAUTION**

Observe the following precautions for the safe disposal of battery.

- Do not incinerate the battery, and do not expose it to a high temperature of 100°C or more. This may lead to fluid leakage or explosion.
- Dispose of the battery according to laws and regulations.

Transportation of products containing a lithium battery:

This product contains a lithium battery. When transporting this product with the battery installed, set this product to OFF mode to prevent the battery from draining. For the procedure to enable OFF mode, refer to Section 6.9. Transportation of primary lithium batteries is restricted by regulations issued by the U.S. Department of Transportation, the International Air Transport Association (IATA), the International Civil Aviation Organization (ICAO), and the European Ground Transportation of Dangerous Goods (ARD). It is the responsibility of the shipper to ensure compliance with these and any other local requirements. Consult current regulations and requirements before shipping.

6.8 Firmware Update

The XS770A firmware can be updated by using Sushi Sensor App. A new version of the XS770A firmware is provided through Sushi Sensor App.



IMPORTANT

It takes a few minutes to upgrade the firmware. Before upgrading the firmware, Android device should set so that it does not enter sleep mode. If the Android device enters sleep mode during the update process, firmware update fails.

(1) Check current firmware version.

(1)-1 On the start screen of Sushi Sensor App, press [Firmware Update] button.

(1)-2 Move the Android device closer to XS770A.
Check current firmware version.

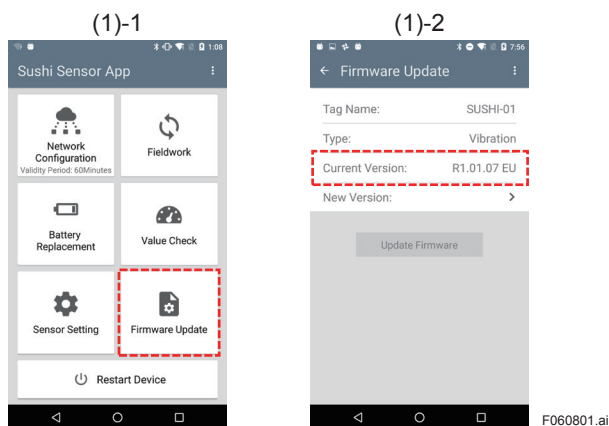


Figure 6-9 Check Current Firmware Version

- (2) Select firmware to be updated.
 - (2)-1 Press [New version] button.
 - (2)-2 Select the firmware version to apply. Selected version number is added check mark.
 - (2)-3 Return the previous screen. Check the selected version is indicated in the "New Version" column.

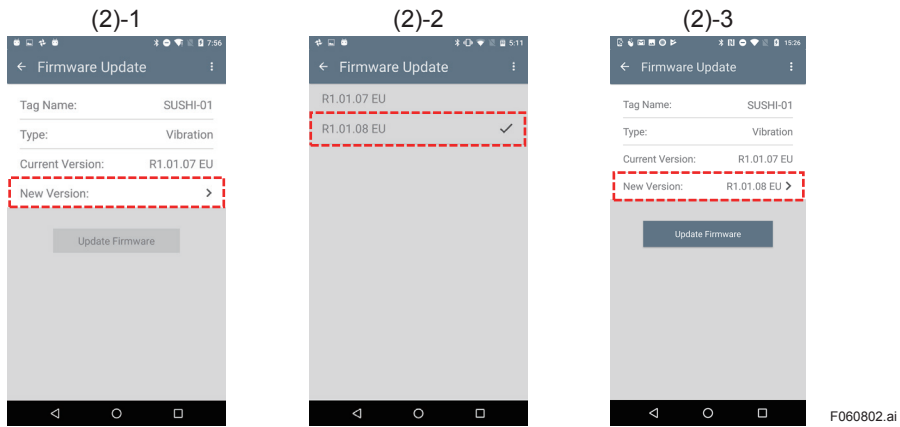


Figure 6-10 Select New Firmware Version

- (3) Update the new firmware.
 - (3)-1 Press [Update Firmware] button.
 - (3)-2 Move the Android device closer to XS770A.
Do not move Android device and XS770A until firmware writing is completed.
It takes about 2 or 3 minutes.
"Firmware Update Completed" message appears after finishing it.*1
 - (3)-3 Press [Done] button.

*1: After firmware writing to XS770A ,XS770A restarts automatically. It take about 1 minute for the restart to complete.



Figure 6-11 Firmware Update

6.9 Device Storage

When you store an XS770A or do not use it for a long period for transportation or other reasons, set the XS770A to OFF mode. OFF mode minimizes battery power consumption.

6.9.1 Change to OFF Mode

This section explains the procedure to change XS770A to OFF mode. After shifting to OFF mode, XS770A can be used only NFC communication function.

- (1) Check current mode
 - (1)-1 Press [menu] icon and [Device ON/OFF] button.
 - (1)-2 Move the Android device closer to XS770A.

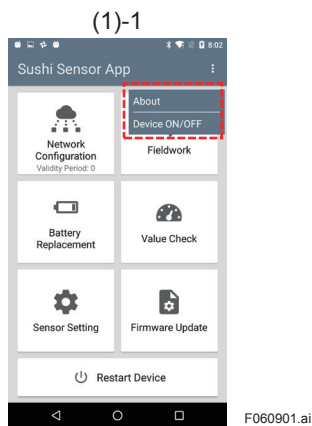


Figure 6-12 Select Device ON/OFF Menu

- (2) Change to OFF mode
 - (2)-1 Check "Current mode is "ON" " message appears on the screen, press [Yes] button.
 - (2)-2 Move the Android device closer to XS770A.
After changing OFF mode, "Changed to "OFF Mode" " message appears and press [Done] button.



Figure 6-13 Shifting XS770A to OFF Mode

6.9.2 Change to ON Mode

This section explains the procedure to return XS770A from OFF mode to ON mode.

- (1) Check current mode.
 - (1)-1 Press [menu] icon and [Device ON/OFF] button.
 - (1)-2 Move the Android device closer to XS770A.

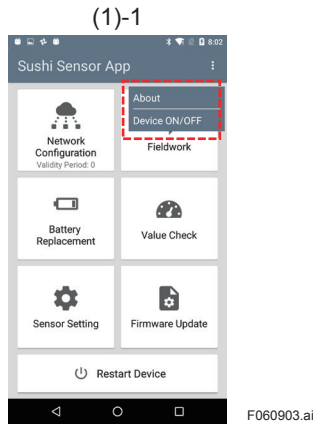


Figure 6-14 Select Device ON/OFF Mode

- (2) Change to ON mode
 - (2)-1 Check "Current mode is "OFF" " message appears on the screen, press [Yes] button.
 - (2)-2 Move the Android device closer to XS770A.
After changing ON mode, Changed to "OFF Mode" message appears. And press [Done] button.

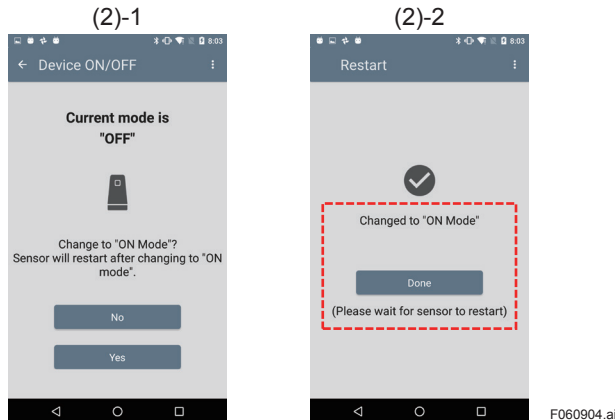


Figure 6-15 Changing XS770A to ON Mode



After executing network configuration, device setting, or run firmware update during OFF mode, XS770A changes to ON mode automatically.

7. XS770A Sending Data

This section describes the data sent by XS770A.

XS770A sends data according to the format described in Table 7-1.

Data_Type field shows the formats of the sending data. The sending period varies depending on Data_Type.

Table 7-1 Sending data format

Parameter Name	Size (Byte)	Description
Data_Type	1	0x10 Sushi Sensor vibration (Z-axis) 0x11 Sushi Sensor vibration (XYZ composite axes) 0x12 Sushi Sensor vibration (X-axis) 0x13 Sushi Sensor vibration (Y-axis) 0x40 Health report information (HRI) 0x41 Self-diagnosis information (DIAG) 0x42 Initialization information (INI) 0x43 GPS information (GPS)
Data	Variable length	Varies depending on Data_Type.

Table 7-2 Data_Type and sending period

Data_Type	Sending period
0x10 Sushi Sensor vibration (Z-axis) 0x11 Sushi Sensor vibration (XYZ composite axes) 0x12 Sushi Sensor vibration (X-axis) 0x13 Sushi Sensor vibration (Y-axis)	Depends on the sensor setting
0x42 Initialization information (INI) 0x43 GPS information	Transmit data after joining the network, and every one hour after connection, up to three times.
0x40 Health report information (HRI) 0x41 Self-diagnosis information (DIAG)	Once every 24 hours

7.1 Sushi Sensor Vibration (Z-axis) Data_Type=0x10

Table 7-3 Sushi Sensor vibration (Z-axis) data format

Parameter Name	Type	Size (Byte)	Description
Data_Type	UINT8	1	0x10
Data_Status	UINT16	2	Shows the status of measured value. All 0: Good Bit15: Acceleration error Bit14: Velocity error Bit13: Temperature error Bit12: Acceleration overrange Bit11: Velocity overrange Bit10: Temperature overrange Bit9: (Reserved) Bit8: Simulation mode Bit0 to 7: (Reserved)
PV_Acceleration	FLOAT16	2	Z-axis acceleration peak value (m/s ²)
PV_Velocity	FLOAT16	2	Z-axis velocity RMS value (mm/s)
PV_Temperature	FLOAT16	2	Temperature measured value (°C)

7.2 Sushi Sensor Vibration (XYZ axes) Data_Type=0x11

Table 7-4 Sushi Sensor vibration (XYZ axes) data format

Parameter Name	Type	Size (Byte)	Description
Data_Type	UINT8	1	0x11
Data_Status	UINT16	2	Shows the status of measured value. All 0: Good Bit15: Acceleration error Bit14: Velocity error Bit13: Temperature error Bit12: Acceleration overrange Bit11: Velocity overrange Bit10: Temperature overrange Bit9: (Reserved) Bit8: Simulation mode Bit0 to 7: (Reserved)
PV_Acceleration	FLOAT16	2	XYZ composite axes acceleration peak value (m/s ²)
PV_Velocity	FLOAT16	2	XYZ composite axes velocity RMS value (mm/s)
PV_Temperature	FLOAT16	2	Temperature measured value (°C)

7.3 Sushi Sensor Vibration (X-axis) Data_Type=0x12

Table 7-5 Sushi Sensor vibration (X-axis) data format

Parameter Name	Type	Size (Byte)	Description
Data_Type	UINT8	1	0x12
Data_Status	UINT16	2	Shows the status of measured value. All 0: Good Bit15: Acceleration error Bit14: Velocity error Bit13: (Reserved) Bit12: Acceleration overrange Bit11: Velocity overrange Bit10: (Reserved) Bit9: (Reserved) Bit8: Simulation mode Bit0 to 7: (Reserved)
PV_Acceleration	FLOAT16	2	X-axis acceleration peak value (m/s ²)
PV_Velocity	FLOAT16	2	X-axis velocity RMS value (mm/s)

7.4 Sushi Sensor Vibration (Y-axis) Data_Type=0x13

Table 7-6 Sushi Sensor vibration (Y-axis) data format

Parameter Name	Type	Size (Byte)	Description
Data_Type	UINT8	1	0x13
Data_Status	UINT16	2	Shows the status of measured value. All 0: Good Bit15: Acceleration error Bit14: Velocity error Bit13: (Reserved) Bit12: Acceleration overrange Bit11: Velocity overrange Bit10: (Reserved) Bit9: (Reserved) Bit8: Simulation mode Bit0 to 7: (Reserved)
PV_Acceleration	FLOAT16	2	Y-axis acceleration peak value (m/s ²)
PV_Velocity	FLOAT16	2	Y-axis velocity RMS value (mm/s)

7.5 Health Report Information (HRI) Data_Type=0x40

Table 7-7 Health report information sending data format

Parameter Name	Type	Size (Byte)	Description
Data_Type	UINT8	1	0x40
UpTime	UINT24	3	Time elapsed after power-on Up to approximately 31 years. Unit: minute
BatteryLeft	UINT8	1	A value obtained by doubling the remaining battery level. Unit: % (Example: When 150, $150 \div 2 = 75\%$)
RSSI	UINT8	1	Receiving strength. Handled as a negative number. Unit: dBm
PER	UINT8	1	Packet error rate detected by the device. Unit: %
SNR	INT8	1	A value obtained by multiplying the device-detected SN ratio by 4. Unit: dB (Example: When 27, $27 \div 4 = 6.75$ dB)

7.6 Self-diagnosis Information (DIAG) Data_Type=0x41

DIAG_STATUS is classified into four categories complying with NE107* of NAMUR (F: Failure,C: Function Check,O: Out of specification,M: Maintenance required), and each category is assigned to Bit27-1. When any Bit in each category is 1, the representative value of the category defined in Bit31-28 turns to 1. Also when any Bit of DIAG_STATUS_DETAIL is ON, Bit0 of DIAG_STATUS turns to 1. Each Bit turns to 1 when status is detected.

* NAMUR NE107 "Self-Monitoring and Diagnosis of Field Devices"

Table 7-8 LoRaPayload format of self-diagnosis information

Parameter Name	Type	Size (Byte)	Description
DATA_TYPE_CODE	UINT8	1	0x41
DIAG_STATUS	UINT32	4	Diagnosis information (outline)
DIAG_STATUS_DETAIL	UINT32	4	Diagnosis information (detail)

Table 7-9 DIAG_STATUS

Bits	Contents	NAMUR category
Bit31(MSB)	F: Failure status	---
Bit30	C: Function check status	---
Bit29	O: Out of specification status	---
Bit28	M: Maintenance required status	---
Bit27	Faults in electronics	F
Bit26	Faults in sensor or actuator element	F
Bit25	Installation,calibration problem	C
Bit24	Out of service	C
Bit23	Outside sensor limits	O
Bit22	Environmental conditions out of device specification	O
Bit21	Fault prediction: Maintenance required	M
Bit20	Power is critical low: maintenance need short-term	M
Bit19	Power is low: maintenance need mid-term	M
Bit18	Not used	---
Bit17	Simulation is active	C
Bit16	Not used	---
Bit15-1	Not used	---
Bit0	Detail information available	---

Table 7-10 **DIAG_STATUS_DETAIL**

Bits	Contents	Diag_Status
Bit31(MSB)	Voltage is low	Bit 20
Bit30	Battery Left is low	Bit 19
Bit29	Temp Hi	Bit 22
Bit28	Temp Low	Bit 22
Bit27	Electrical Failure: RF circuit	Bit 27
Bit26	Electrical Failure: NFC	Bit 27
Bit25	Electrical Failure: Vibration Sensor	Bit 26
Bit24	Electrical Failure: Temperature Sensor	Bit 26
Bit23	Sensor is not provisioned	Bit 25
Bit22	Sensor is not joined	Bit 25
Bit21	Sensor Over flow : Vibration Sensor	Bit 23
Bit20	Sensor Over flow : Temperature Sensor	Bit 23
Bit19	Memory Failure	Bit 27
Bit18	Out of service (Reserved for future use)	Bit 24
Bit17	Simulation Mode	Bit 17
Bit16	OFF Mode	Bit 24
Bit15-0	Not used	---

7.7 Initialization Information Data_Type=0x42

Table 7-11 **Initialization information sending data format**

Parameter Name	Type	Size (Byte)	Description
Data_Type	UINT8	1	0x42
Tag_Name	STRING	10	Tag name defined in the device (up to ten ASCII characters)

7.8 GPS Information Data_Type=0x43

Table 7-12 **GPS information sending data format**

Parameter Name	Type	Size (Byte)	Description
Data_Type	UINT8	1	0x43
Longitude	FLOAT32	4	Longitude. Positive value for east longitude. Negative for west longitude.
Latitude	FLOAT32	4	Latitude. Positive value for north latitude. Negative for south latitude.

8. Software

8.1 Use of Programs from Third Parties

This product uses software libraries or other programs the rights of which are owned by third parties (the "Third Party's Program") including software based on an open source license(s).

■ Third Party's Program License

The following shows the license terms of the Third Party's Program used in this product.

● LoRaWAN endpoint stack

--- Revised BSD License ---

Copyright (c) 2013, SEMTECH S.A.

All rights reserved.

Redistribution and use in source and binary forms, with or without modification, are permitted provided that the following conditions are met:

- * Redistributions of source code must retain the above copyright notice, this list of conditions and the following disclaimer.
- * Redistributions in binary form must reproduce the above copyright notice, this list of conditions and the following disclaimer in the documentation and/or other materials provided with the distribution.
- * Neither the name of the Semtech corporation nor the names of its contributors may be used to endorse or promote products derived from this software without specific prior written permission.

THIS SOFTWARE IS PROVIDED BY THE COPYRIGHT HOLDERS AND CONTRIBUTORS "AS IS" AND

ANY EXPRESS OR IMPLIED WARRANTIES, INCLUDING, BUT NOT LIMITED TO, THE IMPLIED WARRANTIES OF MERCHANTABILITY AND FITNESS FOR A PARTICULAR PURPOSE ARE DISCLAIMED. IN NO EVENT SHALL SEMTECH S.A. BE LIABLE FOR ANY DIRECT, INDIRECT, INCIDENTAL, SPECIAL, EXEMPLARY, OR CONSEQUENTIAL DAMAGES (INCLUDING, BUT NOT LIMITED TO, PROCUREMENT OF SUBSTITUTE GOODS OR SERVICES; LOSS OF USE, DATA, OR PROFITS; OR BUSINESS INTERRUPTION) HOWEVER CAUSED AND ON ANY THEORY OF LIABILITY, WHETHER IN CONTRACT, STRICT LIABILITY, OR TORT (INCLUDING NEGLIGENCE OR OTHERWISE) ARISING IN ANY WAY OUT OF THE USE OF THIS SOFTWARE, EVEN IF ADVISED OF THE POSSIBILITY OF SUCH DAMAGE.

- **liblzg**

zlib.h -- interface of the 'zlib' general purpose compression library
version 1.2.11, January 15th, 2017

Copyright (C) 1995-2017 Jean-loup Gailly and Mark Adler

This software is provided 'as-is', without any express or implied warranty. In no event will the authors be held liable for any damages arising from the use of this software.

Permission is granted to anyone to use this software for any purpose, including commercial applications, and to alter it and redistribute it freely, subject to the following restrictions:

1. The origin of this software must not be misrepresented; you must not claim that you wrote the original software. If you use this software in a product, an acknowledgment in the product documentation would be appreciated but is not required.
2. Altered source versions must be plainly marked as such, and must not be misrepresented as being the original software.
3. This notice may not be removed or altered from any source distribution.

Jean-loup Gailly Mark Adler
jloup@gzip.org madler@alumni.caltech.edu

- **Okhttp**

Refer to Sushi Sensor App Terms and Conditions of Open Source Software.

- **Gson**

Refer to Sushi Sensor App Terms and Conditions of Open Source Software.

■ **Scope of Warranty and Responsibility**

Yokogawa does not guarantee the operations of third party programs themselves in accordance with the above related provisions.

■ **Individual Information of the Open Source Software**

For details on the module names and source codes of the open source software, contact your nearest Yokogawa dealer.

8.2 Sushi Sensor App Software License Agreement

Sushi Sensor App Software License Agreement

IMPORTANT - PLEASE READ CAREFULLY BEFORE INSTALLING OR USING:

THIS SOFTWARE LICENSE AGREEMENT ("AGREEMENT") IS A LEGALLY BINDING CONTRACT BETWEEN THE END USER ("LICENSEE") AND YOKOGAWA ELECTRIC CORPORATION AND ITS DESIGNATED SUBSIDIARIES (COLLECTIVELY, "YOKOGAWA") FOR LICENSEE TO INSTALL OR USE YOKOGAWA'S SUSHI SENSOR APP SOFTWARE PRODUCT. SUBJECT TO LICENSEE'S CONSENT TO THE TERMS AND CONDITIONS OF THIS AGREEMENT, LICENSEE MAY INSTALL THE SOFTWARE PRODUCT. IF LICENSEE DOES NOT AGREE, LICENSEE MAY NOT INSTALL NOR USE THE SOFTWARE PRODUCT.

1. Scope

- 1.1 This Agreement applies to the Sushi Sensor App software products (the "Software Product") of which Yokogawa or any of its licensors owns the intellectual property rights.
- 1.2 The Software Product includes, without limitation, computer programs, key codes (software license files), manuals and other associated documents, databases, fonts, input data, and any images, photographs, animations, video, voice, music, text, and applets (software linked to text and icons) embedded in the software.
- 1.3 Unless otherwise provided by Yokogawa, this Agreement applies to the updates and upgrades of the Software Product.

2. Grant of License

- 2.1 Subject to the terms and conditions of this Agreement, Yokogawa hereby grants to Licensee a non-exclusive and non-transferable right to use the Software Product on the terminal equipment recommended by Yokogawa ("Recommended Terminals") as the tool for Licensee to use Yokogawa's Sushi Sensor. Use of the Software Product shall be subject to the terms and conditions of General Specifications, instruction manuals and other associated documents in addition to this Agreement.
- 2.2 Unless otherwise agreed or provided by Yokogawa in writing, the following acts are prohibited:
 - a) to reproduce the Software Product;
 - b) to sell, lease, distribute, transfer, pledge, sublicense, make available via the network or otherwise convey the Software or the license granted herein to any other person or entity;
 - c) to cause, permit or attempt to dump, disassemble, decompile, reverse-engineer, or otherwise translate or reproduce the Software Product into source code or other human readable format, or to revise or translate the Software Product into other language and change it to other formats than that in which Yokogawa provided;
 - d) to cause, permit or attempt to remove any copy protection used or provided in the Software Product;
 - e) to remove any copyright notice, trademark notice, logo or other proprietary notices or identification shown in the Software Product; or
 - f) to develop or have developed derivative software or other computer programs which are based on the Software Product unless otherwise permitted by Yokogawa in writing.

- 2.3 Any and all technology, algorithms, know-how and process contained in or applicable on the Software Product are the intellectual property or trade secret of Yokogawa or any of its licensors. Copyright, trademark and any other intellectual property rights in and ownership of the Software Product shall be retained by Yokogawa or any of its licensors and none of the rights will be transferred to Licensee hereunder.
- 2.4 Licensee agrees to maintain the aforementioned intellectual property and trade secrets of Yokogawa or any of its licensors and key codes (software license files) in strict confidence, not to disclose it to any party other than Licensee's employees, officers, directors or similar staff who have a legitimate need to know to use the Software Product and agreed in writing to abide by the obligations hereunder.
- 2.5 Upon expiration or termination of this Agreement, any copies of the Software Product retained in Recommended Terminals shall be deleted irretrievably. If Licensee disposes of Recommended Terminals in which the Software Product or its copy is stored, the contents shall be irretrievably deleted.
- 2.6 The Software Product contains open source software ("OSS"), for which the special terms and conditions set forth in Appendix 1 shall take precedence over this Agreement.

3. Restrictions on use

- 3.1 Unless otherwise agreed in writing between Licensee and Yokogawa, the Software Product is not intended, designed, produced or licensed for aircraft operation or control, ship navigation, or ground facility or device for support of the aforesaid operation or control, nor for planning, construction, maintenance or operation of any nuclear related facility.
- 3.2 If the Software Product is used for the above mentioned purposes, neither Yokogawa nor Supplier assumes liability for any claim or damage arising from the said use and Licensee shall indemnify and hold Yokogawa, Supplier, their affiliates, subcontractors, officers, directors, employees and agents harmless from any liability or damage whatsoever, including any court costs and attorney's fees, arising out of or related to the said use.

4. No Warranty

- 4.1 THE SOFTWARE PRODUCT SHALL BE PROVIDED TO LICENSEE ON AN "AS IS" BASIS. TO THE MAXIMUM EXTENT PERMITTED BY LAW, YOKOGAWA DISCLAIMS ALL WARRANTIES OF ANY KIND, EITHER EXPRESSED OR IMPLIED, INCLUDING, WITHOUT LIMITATION, IMPLIED WARRANTIES OF MERCHANTABILITY, SATISFACTORY QUALITY, FITNESS FOR A PARTICULAR PURPOSE AND NONINFRINGEMENT OF THIRD PARTY RIGHTS. YOKOGAWA DOES NOT WARRANT THAT THE FUNCTIONS CONTAINED IN THE SOFTWARE PRODUCT WILL MEET ANY REQUIREMENTS OR NEEDS LICENSEE MAY HAVE, THAT THE SOFTWARE PRODUCT WILL OPERATE ERROR FREE, OR IN AN UNINTERRUPTED FASHION, THAT ANY DEFECTS OR ERRORS IN THE SOFTWARE PRODUCT WILL BE CORRECTED, THAT THE SOFTWARE PRODUCT HAS NO INCONSISTENCY OR INTERFERENCE WITH OTHER SOFTWARE, THAT THE SOFTWARE PRODUCT OR THE RESULTS ARISING THEREFROM IS PRECISE, RELIABLE OR UP-TO-DATE, THAT THE SOFTWARE PRODUCT IS COMPATIBLE WITH ANY PARTICULAR SOFTWARE REQUIRED TO RUN THE SOFTWARE PRODUCT, OR THAT THE SOFTWARE PRODUCT IS FREE OF VULNERABILITY TO INTRUSION OR ATTACK. SOME JURISDICTIONS DO NOT ALLOW THE WAIVER OR EXCLUSION OF IMPLIED WARRANTIES SO THEY MAY NOT APPLY TO LICENSEE.
- 4.2 Notwithstanding the forgoing, the warranty for OSS shall apply to Clause 2.6.

5. Limitation of Liability

EXCEPT TO THE EXTENT THAT LIABILITY MAY NOT LAWFULLY BE EXCLUDED, YOKOGAWA SHALL NOT BE LIABLE TO LICENSEE FOR ANY DAMAGE OR LOSS, WHETHER DIRECT OR INDIRECT, INCLUDING BUT NOT LIMITED TO LOSS OF BUSINESS PROFITS, BUSINESS INTERRUPTION, LOSS OF MATERIALS OR PRODUCTS, LOSS OF PRODUCTION, LOSS OF CONTRACTS, LOSS OR DESTRUCTION OF DATA, LOSS OF AVAILABILITY AND THE LIKE, OR INDIRECT, SPECIAL, INCIDENTAL, CONSEQUENTIAL OR EXEMPLARY DAMAGES, OR OTHER SIMILAR DAMAGES OF ANY KIND, ARISING OUT OF THE USE OR INABILITY TO USE OF THE SOFTWARE PRODUCT, OR ARISING OUT OF ITS GENERATED APPLICATIONS OR DATA, EVEN IF ADVISED OF THE POSSIBILITY OF SUCH DAMAGES, WHETHER BASED IN WARRANTY (EXPRESS OR IMPLIED), CONTRACT, STRICT LIABILITY, TORT (INCLUDING NEGLIGENCE), OR ANY OTHER LEGAL OR EQUITABLE GROUNDS

6. Assignment

Licensee shall not assign its rights or obligations under this Agreement without prior written consent of Yokogawa. If Licensee novates or assigns this Agreement and the Software Product with Yokogawa's consent, Licensee shall transfer all copies and whole part of the Software Product to the assignee and shall delete any and all copy of the Software Product in possession irretrievably. This Agreement shall inure to the benefit of and shall be binding on the successors of the parties.

7. Export Control

Licensee agrees to comply with the export control and related laws, regulations and orders of Japan, the United States of America, and any other applicable countries and, if Licensee exports or re-exports the Software Product, to obtain export/import permit and take all necessary procedures under Licensee's own responsibility and at Licensee's own expense.

8. Withholding

Even after the license being granted under this Agreement, should there be any change in circumstances or environment of use which was not foreseen at the time of delivery and, in Yokogawa's reasonable opinion, is not appropriate for using the Software Product, or if Yokogawa otherwise reasonably believes it is inappropriate for Licensee to continue using the Software Product, Yokogawa may suspend or withhold the license provided hereunder.

9. Termination

Yokogawa shall have the right to terminate this Agreement with immediate effect upon notice to Licensee, if Licensee breaches any of the terms and conditions hereof. Upon termination of this Agreement, Licensee shall promptly cease using the Software Product and, in accordance with sub-clause 2.5, irretrievably delete all copies of the Software Product, certifying the same in writing. Clauses 2.4 and 2.5, 5 and 10 shall survive any termination of this Agreement.

10. Governing Law; Dispute Resolution

This Agreement shall be governed by and construed in accordance with the laws of Japan. If Licensee is a Japanese individual or entity, all disputes, controversies or differences which may arise between the parties hereto, out of, in relation to or in connection with this Agreement ("Dispute") shall be brought exclusively in the Tokyo District Court (The Main Court) in Japan. If Licensee is not a Japanese individual or entity, any Dispute shall be finally settled by arbitration in Tokyo, Japan in accordance with the Commercial Arbitration Rules of the Japan Commercial Arbitration Association. All proceedings in arbitration shall be conducted in the English language, unless otherwise agreed. The award of arbitration shall be final and binding upon both parties, however, each party may make an application to any court having jurisdiction for judgment to be entered on the award and/or for enforcement of the award.

11. Miscellaneous

- 11.1 If any part of this Agreement is found void or unenforceable, it shall not affect the validity of the balance of the Agreement, which shall remain valid and enforceable according to its terms and conditions. The parties hereby agree to attempt to substitute for such invalid or unenforceable provision a valid or enforceable provision that achieves to the greatest extent possible the economic, legal and commercial objectives of the invalid or unenforceable provision.
- 11.2 Failure by either party to insist on performance of this Agreement or to exercise a right does not prevent such party from doing so at a later time, either in relation to that default or any subsequent default.

Sushi Sensor App Terms and Conditions of Open Source Software

1. Open Source Software License

The Software Product uses or contains software licensed or distributed under any of the following licenses ("Open Source Software"). Notwithstanding anything to the contrary stated in the Sushi Sensor App Software License Agreement, installation or use of Open Source Software shall be subject to the following license terms and this Terms and Conditions of Open Source Software, which shall prevail over the Sushi Sensor App Software License Agreement. Some of Open Source Software may, in its accompanying files, specify different version of the license terms and/or additional terms, which, if any, shall take precedence over the following license terms:

- Okhttp (<http://www.apache.org/licenses/LICENSE-2.0>)
- Gson (<http://www.apache.org/licenses/LICENSE-2.0>)

The text of the above license terms may be provided below and available in the relevant websites.

2. Limited Warranty

Each Open Source Software shall be provided on an "AS IS" basis without warranty of any kind whether expressed or implied, including without limitation, any warranties of merchantability or fitness for a particular purpose, non-infringement of third party rights (including, but not limited to patent, copyright, trade secret).

3. Limitation of Liability

IN ADDITION TO AND WITHOUT LIMITING THE GENERALITY OF THE LIMITATION OF LIABILITY PROVISIONS SET FORTH IN OPEN SOURCE SOFTWARE LICENSES OR SUSHI SENSOR APP SOFTWARE LICENSE AGREEMENT, UNLESS OTHERWISE REQUIRED BY APPLICABLE LAW, IN NO EVENT SHALL YOKOGAWA AND SUPPLIERS BE LIABLE, IN RELATION TO OPEN SOURCE SOFTWARE, FOR ANY CLAIM, LOSS OR DAMAGE BASED UPON OR RELATED TO, A THIRDPARTY CLAIM, ACTUAL OR ALLEGED INFRINGEMENT, MALFUNCTIONS OR LOSS OF DATA, OR ANY DIRECT, INDIRECT, INCIDENTAL, CONSEQUENTIAL, SPECIAL, EXEMPLARY OR PUNITIVE DAMAGES, WHETHER ARISING IN TORT, CONTRACT, OR OTHERWISE, EVEN IF YOKOGAWA, ITS AFFILIATES OR SUPPLIERS HAVE BEEN ADVISED OF THE POSSIBILITY OF SUCH CLAIMS OR DAMAGES.

=====

■ Okhttp

Okhttp is released under the Apache 2.0 license.
Copyright 2016 Square, Inc.

Apache License
Version 2.0, January 2004
<http://www.apache.org/licenses/>

TERMS AND CONDITIONS FOR USE, REPRODUCTION, AND DISTRIBUTION

1. Definitions.

"License" shall mean the terms and conditions for use, reproduction, and distribution as defined by Sections 1 through 9 of this document.

"Licensor" shall mean the copyright owner or entity authorized by the copyright owner that is granting the License.

"Legal Entity" shall mean the union of the acting entity and all other entities that control, are controlled by, or are under common control with that entity. For the purposes of this definition, "control" means (i) the power, direct or indirect, to cause the direction or management of such entity, whether by contract or otherwise, or (ii) ownership of fifty percent (50%) or more of the outstanding shares, or (iii) beneficial ownership of such entity.

"You" (or "Your") shall mean an individual or Legal Entity exercising permissions granted by this License.

"Source" form shall mean the preferred form for making modifications, including but not limited to software source code, documentation source, and configuration files.

"Object" form shall mean any form resulting from mechanical transformation or translation of a Source form, including but not limited to compiled object code, generated documentation, and conversions to other media types.

"Work" shall mean the work of authorship, whether in Source or Object form, made available under the License, as indicated by a copyright notice that is included in or attached to the work (an example is provided in the Appendix below).

"Derivative Works" shall mean any work, whether in Source or Object form, that is based on (or derived from) the Work and for which the editorial revisions, annotations, elaborations, or other modifications represent, as a whole, an original work of authorship. For the purposes of this License, Derivative Works shall not include works that remain separable from, or merely link (or bind by name) to the interfaces of, the Work and Derivative Works thereof.

"Contribution" shall mean any work of authorship, including the original version of the Work and any modifications or additions to that Work or Derivative Works thereof, that is intentionally submitted to Licensor for inclusion in the Work by the copyright owner or by an individual or Legal Entity authorized to submit on behalf of the copyright owner. For the purposes of this definition, "submitted" means any form of electronic, verbal, or written communication sent to the Licensor or its representatives, including but not limited to communication on electronic mailing lists, source code control systems, and issue tracking systems that are managed by, or on behalf of, the Licensor for the purpose of discussing and improving the Work, but excluding communication that is conspicuously marked or otherwise designated in writing by the copyright owner as "Not a Contribution."

"Contributor" shall mean Licensor and any individual or Legal Entity on behalf of whom a Contribution has been received by Licensor and subsequently incorporated within the Work.

2. Grant of Copyright License. Subject to the terms and conditions of this License, each Contributor hereby grants to You a perpetual, worldwide, non-exclusive, no-charge, royalty-free, irrevocable copyright license to reproduce, prepare Derivative Works of, publicly display, publicly perform, sublicense, and distribute the Work and such Derivative Works in Source or Object form.

3. Grant of Patent License. Subject to the terms and conditions of this License, each Contributor hereby grants to You a perpetual, worldwide, non-exclusive, no-charge, royalty-free, irrevocable (except as stated in this section) patent license to make, have made, use, offer to sell, sell, import, and otherwise transfer the Work, where such license applies only to those patent claims licensable by such Contributor that are necessarily infringed by their Contribution(s) alone or by combination of their Contribution(s) with the Work to which such Contribution(s) was submitted. If You institute patent litigation against any entity (including a cross-claim or counterclaim in a lawsuit) alleging that the Work or a Contribution incorporated within the Work constitutes direct or contributory patent infringement, then any patent licenses granted to You under this License for that Work shall terminate as of the date such litigation is filed.

4. Redistribution. You may reproduce and distribute copies of the Work or Derivative Works thereof in any medium, with or without modifications, and in Source or Object form, provided that You meet the following conditions:

You must give any other recipients of the Work or Derivative Works a copy of this License; and

You must cause any modified files to carry prominent notices stating that You changed the files; and

You must retain, in the Source form of any Derivative Works that You distribute, all copyright, patent, trademark, and attribution notices from the Source form of the Work, excluding those notices that do not pertain to any part of the Derivative Works; and

If the Work includes a "NOTICE" text file as part of its distribution, then any Derivative Works that You distribute must include a readable copy of the attribution notices contained within such NOTICE file, excluding those notices that do not pertain to any part of the Derivative Works, in at least one of the following places: within a NOTICE text file distributed as part of the Derivative Works; within the Source form or documentation, if provided along with the Derivative Works; or, within a display generated by the Derivative Works, if and wherever such third-party notices normally appear. The contents of the NOTICE file are for informational purposes only and do not modify the License. You may add Your own attribution notices within Derivative Works that You distribute, alongside or as an addendum to the NOTICE text from the Work, provided that such

additional attribution notices cannot be construed as modifying the License.

You may add Your own copyright statement to Your modifications and may provide additional or different license terms and conditions for use, reproduction, or distribution of Your modifications, or for any such Derivative Works as a whole, provided Your use, reproduction, and distribution of the Work otherwise complies with the conditions stated in this License.

5. Submission of Contributions. Unless You explicitly state otherwise, any Contribution intentionally submitted for inclusion in the Work by You to the Licensor shall be under the terms and conditions of this License, without any additional terms or conditions. Notwithstanding the above, nothing herein shall supersede or modify the terms of any separate license agreement you may have executed with Licensor regarding such Contributions.

6. Trademarks. This License does not grant permission to use the trade names, trademarks, service marks, or product names of the Licensor, except as required for reasonable and customary use in describing the origin of the Work and reproducing the content of the NOTICE file.

7. Disclaimer of Warranty. Unless required by applicable law or agreed to in writing, Licensor provides the Work (and each Contributor provides its Contributions) on an "AS IS" BASIS, WITHOUT WARRANTIES OR CONDITIONS OF ANY KIND, either express or implied, including, without limitation, any warranties or conditions of TITLE, NON-INFRINGEMENT, MERCHANTABILITY, or FITNESS FOR A PARTICULAR PURPOSE. You are solely responsible for determining the appropriateness of using or redistributing the Work and assume any risks associated with Your exercise of permissions under this License.

8. Limitation of Liability. In no event and under no legal theory, whether in tort (including negligence), contract, or otherwise, unless required by applicable law (such as deliberate and grossly negligent acts) or agreed to in writing, shall any Contributor be liable to You for damages, including any direct, indirect, special, incidental, or consequential damages of any character arising as a result of this License or out of the use or inability to use the Work (including but not limited to damages for loss of goodwill, work stoppage, computer failure or malfunction, or any and all other commercial damages or losses), even if such Contributor has been advised of the possibility of such damages.

9. Accepting Warranty or Additional Liability. While redistributing the Work or Derivative Works thereof, You may choose to offer, and charge a fee for, acceptance of support, warranty, indemnity, or other liability obligations and/or rights consistent with this License. However, in accepting such obligations, You may act only on Your own behalf and on Your sole responsibility, not on behalf of any other Contributor, and only if You agree to indemnify, defend, and hold each Contributor harmless for any liability incurred by, or claims asserted against, such Contributor by reason of your accepting any such warranty or additional liability.

END OF TERMS AND CONDITIONS

Licensed under the Apache License, Version 2.0 (the "License");

you may not use this file except in compliance with the License.

You may obtain a copy of the License at

<http://www.apache.org/licenses/LICENSE-2.0>

Unless required by applicable law or agreed to in writing, software distributed under the License is distributed on an "AS IS" BASIS, WITHOUT WARRANTIES OR CONDITIONS OF ANY KIND, either express or implied. See the License for the specific language governing permissions and limitations under the License.

■ Gson

Gson is released under the Apache 2.0 license.
Copyright 2008 Google Inc.

Apache License
Version 2.0, January 2004
<http://www.apache.org/licenses/>

TERMS AND CONDITIONS FOR USE, REPRODUCTION, AND DISTRIBUTION

1. Definitions.

"License" shall mean the terms and conditions for use, reproduction, and distribution as defined by Sections 1 through 9 of this document.

"Licensor" shall mean the copyright owner or entity authorized by the copyright owner that is granting the License.

"Legal Entity" shall mean the union of the acting entity and all other entities that control, are controlled by, or are under common control with that entity. For the purposes of this definition, "control" means (i) the power, direct or indirect, to cause the direction or management of such entity, whether by contract or otherwise, or (ii) ownership of fifty percent (50%) or more of the outstanding shares, or (iii) beneficial ownership of such entity.

"You" (or "Your") shall mean an individual or Legal Entity exercising permissions granted by this License.

"Source" form shall mean the preferred form for making modifications, including but not limited to software source code, documentation source, and configuration files.

"Object" form shall mean any form resulting from mechanical transformation or translation of a Source form, including but not limited to compiled object code, generated documentation, and conversions to other media types.

"Work" shall mean the work of authorship, whether in Source or Object form, made available under the License, as indicated by a copyright notice that is included in or attached to the work (an example is provided in the Appendix below).

"Derivative Works" shall mean any work, whether in Source or Object form, that is based on (or derived from) the Work and for which the editorial revisions, annotations, elaborations, or other modifications represent, as a whole, an original work of authorship. For the purposes of this License, Derivative Works shall not include works that remain separable from, or merely link (or bind by name) to the interfaces of, the Work and Derivative Works thereof.

"Contribution" shall mean any work of authorship, including the original version of the Work and any modifications or additions to that Work or Derivative Works thereof, that is intentionally submitted to Licensor for inclusion in the Work by the copyright owner or by an individual or Legal Entity authorized to submit on behalf of the copyright owner. For the purposes of this definition, "submitted" means any form of electronic, verbal, or written communication sent to the Licensor or its representatives, including but not limited to communication on electronic mailing lists, source code control systems, and issue tracking systems that are managed by, or on behalf of, the Licensor for the purpose of discussing and improving the Work, but excluding communication that is conspicuously marked or otherwise designated in writing by the copyright owner as "Not a Contribution."

"Contributor" shall mean Licensor and any individual or Legal Entity on behalf of whom a Contribution has been received by Licensor and subsequently incorporated within the Work.

2. Grant of Copyright License. Subject to the terms and conditions of this License, each Contributor hereby grants to You a perpetual, worldwide, non-exclusive, no-charge, royalty-free, irrevocable copyright license to reproduce, prepare Derivative Works of, publicly display, publicly perform, sublicense, and distribute the Work and such Derivative Works in Source or Object form.

3. Grant of Patent License. Subject to the terms and conditions of this License, each Contributor hereby grants to You a perpetual, worldwide, non-exclusive, no-charge, royalty-free, irrevocable (except as stated in this section) patent license to make, have made, use, offer to sell, sell, import, and otherwise transfer the Work, where such license applies only to those patent claims licensable by such Contributor that are necessarily infringed by their Contribution(s) alone or by combination of their Contribution(s) with the Work to which such Contribution(s) was submitted. If You institute patent litigation against any entity (including a cross-claim or counterclaim in a lawsuit) alleging that the Work or a Contribution incorporated within the Work constitutes direct or contributory patent infringement, then any patent licenses granted to You under this License for that Work shall terminate as of the date such litigation is filed.

4. Redistribution. You may reproduce and distribute copies of the Work or Derivative Works thereof in any medium, with or without modifications, and in Source or Object form, provided that You meet the following conditions:

You must give any other recipients of the Work or Derivative Works a copy of this License; and

You must cause any modified files to carry prominent notices stating that You changed the files; and

You must retain, in the Source form of any Derivative Works that You distribute, all copyright, patent, trademark, and attribution notices from the Source form of the Work, excluding those notices that do not pertain to any part of the Derivative Works; and

If the Work includes a "NOTICE" text file as part of its distribution, then any Derivative Works that You distribute must include a readable copy of the attribution notices contained within such NOTICE file, excluding those notices that do not pertain to any part of the Derivative Works, in at least one of the following places: within a NOTICE text file distributed as part of the Derivative Works; within the Source form or documentation, if provided along with the Derivative Works; or, within a display generated by the Derivative Works, if and wherever such third-party notices normally appear. The contents of the NOTICE file are for informational purposes only and do not modify the License. You may add Your own attribution notices within Derivative Works that You distribute, alongside or as an addendum to the NOTICE text from the Work, provided that such additional attribution notices cannot be construed as modifying the License.

You may add Your own copyright statement to Your modifications and may provide additional or different license terms and conditions for use, reproduction, or distribution of Your modifications, or for any such Derivative Works as a whole, provided Your use, reproduction, and distribution of the Work otherwise complies with the conditions stated in this License.

5. Submission of Contributions. Unless You explicitly state otherwise, any Contribution intentionally submitted for inclusion in the Work by You to the Licensor shall be under the terms and conditions of this License, without any additional terms or conditions. Notwithstanding the above, nothing herein shall supersede or modify the terms of any separate license agreement you may have executed with Licensor regarding such Contributions.

6. Trademarks. This License does not grant permission to use the trade names, trademarks, service marks, or product names of the Licensor, except as required for reasonable and customary use in describing the origin of the Work and reproducing the content of the NOTICE file.

7. Disclaimer of Warranty. Unless required by applicable law or agreed to in writing, Licensor provides the Work (and each Contributor provides its Contributions) on an "AS IS" BASIS, WITHOUT WARRANTIES OR CONDITIONS OF ANY KIND, either express or implied, including, without limitation, any warranties or conditions of TITLE, NON-INFRINGEMENT, MERCHANTABILITY, or FITNESS FOR A PARTICULAR PURPOSE. You are solely responsible for determining the appropriateness of using or redistributing the Work and assume any risks associated with Your exercise of permissions under this License.

8. Limitation of Liability. In no event and under no legal theory, whether in tort (including negligence), contract, or otherwise, unless required by applicable law (such as deliberate and grossly negligent acts) or agreed to in writing, shall any Contributor be liable to You for damages, including any direct, indirect, special, incidental, or consequential damages of any character arising as a result of this License or out of the use or inability to use the Work (including but not limited to damages for loss of goodwill, work stoppage, computer failure or malfunction, or any and all other commercial damages or losses), even if such Contributor has been advised of the possibility of such damages.

9. Accepting Warranty or Additional Liability. While redistributing the Work or Derivative Works thereof, You may choose to offer, and charge a fee for, acceptance of support, warranty, indemnity, or other liability obligations and/or rights consistent with this License. However, in accepting such obligations, You may act only on Your own behalf and on Your sole responsibility, not on behalf of any other Contributor, and only if You agree to indemnify, defend, and hold each Contributor harmless for any liability incurred by, or claims asserted against, such Contributor by reason of your accepting any such warranty or additional liability.

END OF TERMS AND CONDITIONS

Licensed under the Apache License, Version 2.0 (the "License");
you may not use this file except in compliance with the License.
You may obtain a copy of the License at

<http://www.apache.org/licenses/LICENSE-2.0>

Unless required by applicable law or agreed to in writing, software
distributed under the License is distributed on an "AS IS" BASIS,
WITHOUT WARRANTIES OR CONDITIONS OF ANY KIND, either express or implied.
See the License for the specific language governing permissions and
limitations under the License.

(End)

9. General Specifications

Please refer to GS 01W06E01-01EN for the latest information.

9.1 Standard Specifications

■ WIRELESS SPECIFICATIONS

Communication Protocol:

LoRaWAN class A, EU868, AS923

Data Rate:

250 to 11000 bps (LoRa modulation)

Frequency:

[Area code: 2]

863 to 870 MHz*

*: This wireless frequency can be used throughout Europe, although there are some restrictions in Sweden and Greece.

[Area code: 4]

919 to 925 MHz*

*: Available frequency bands vary depending on the country.

Radio Security:

AES 128 bit encryption

RF Transmitter Power:

Max. 7 dBm

Antenna:

Built-in omni-directional antenna

■ POWER SUPPLY SPECIFICATIONS

Battery:

Lithium thionyl chloride battery: 1 unit (dedicated product)

Rated voltage: 3.6 V

Rated capacity: 2.6 Ah

■ PERFORMANCE SPECIFICATIONS

Measurement:

Item		Specifications
Vibration	Measurement	Acceleration (peak), Velocity (RMS)
	Axis	X, Y, Z axes and 3-axis composite
	Range *1	Acceleration: 0 to 130 m/s ² Velocity *2: 0 to 20 mm/s
	Frequency range	10 to 1,000 Hz (± 3 dB)
	Accuracy (100 Hz)	X, Y, Z axes : ±10% FS 3-axis composite : ±20% FS
Temperature	Measurement	Temperature
	Range	-20 to 85°C
	Resolution	0.1°C
	Measurement part	Base

*1: Peak value of the input vibration. For the relationship between the frequency band and range, refer to the following figure.

*2: The 20 mm/s pk value is equivalent to 14 mm/s RMS when input is based on a sine wave.

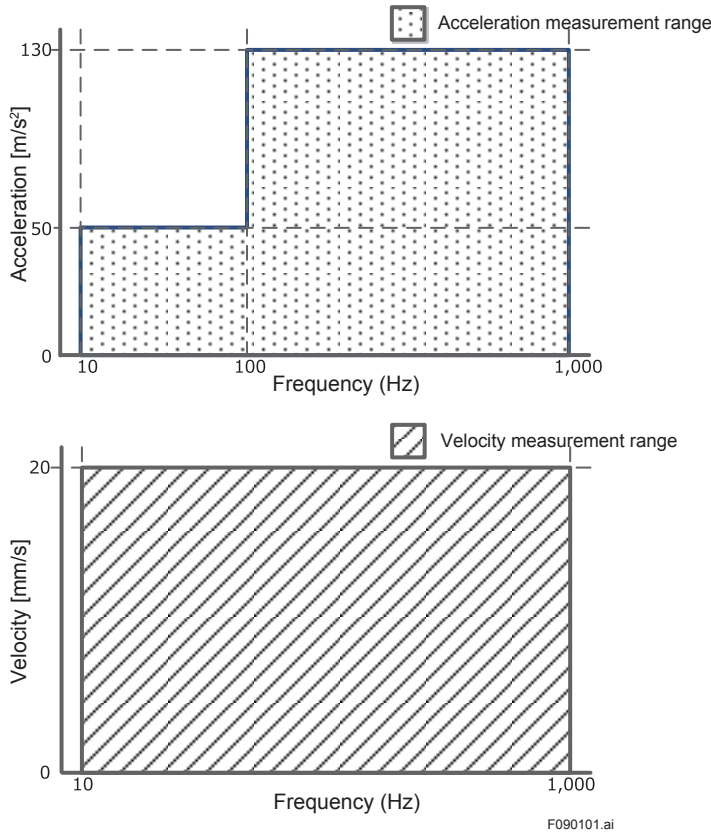


Figure 9-1 Measurable Range

Battery Characteristics:

The typical battery life is 4 years in the following conditions*.

- Update period: 1 hour
- Ambient temperature: 23±2°C

*: Environmental condition such as vibration and the type of connected device may affect the battery life.

Update Time:

1 minute to 3 days

■ FUNCTIONAL SPECIFICATIONS

Output:

LoRaWAN (EU868: EU, AS923: Southeast Asia)

NFC Interface:

NFC forum Type 2 Tag

Diagnosis Function:

Battery alarm, internal temperature, wireless communication failures, sensor over-range, sensor failures, memory failures

Software Download Function:

Allows the user to update software of the sensor via the NFC interface.

■ INSTALLATION ENVIRONMENT

Ambient Temperature Limits:

Operating: -20 to 80°C (Explosion protected (ATEX))

Ambient Humidity Limits:

Operating: 0 to 100% RH (non-condensation)

Shock Resistance:

100 G

■ REGULATORY COMPLIANCE STATEMENTS

This device satisfies the following standards.

*: Please confirm that an installation region fulfills an applicable standard. If additional regulatory information and approvals are required, contact a Yokogawa representative.

Telecommunication Compliance:

RE Directive (EEA and EFTA Countries)

CE Conformity:

RoHS Directive: EN50581

RE Directive: Safety: EN61010-1 (Indoor/Outdoor use), EN62479

EMC: EN 301 489-1, EN 301 489-3, EN61326-1 Class A Table 2,
EN61326-2-3, EN55011 Class A

Radio Spectrum: EN 300 220-2 (Band h1.3 in the table 1 of CEPT ERC Rec.
70-03), EN 300 330

ATEX Intrinsically safe declaration:

Applicable standard: EN 60079-0:2012+A11:2013, EN 60079-11:2012

II 3 G Ex ic IIB T4 Gc

Enclosure: IP66/IP67 in accordance with EN 60529

Ambient temperature: -20 to 80°C (-4 to 176°F)

Degrees of protection:

IP66/IP67

■ PHYSICAL SPECIFICATION

Housing Material:

Case: Plastic (PBT)

Base: Stainless steel

Weight:

260 g

Mounting:

Mounting on the measurement target using the screw * (a hexagon socket set screw is included)

*: Can also be mount using the magnetic holder supplied as an accessory. Note that, when using the magnetic holder, the vibration measurement frequency band drops.

9.2 Software Specifications

■ SUSHI SENSOR APP

This software is used to perform the setting and status check of this product via the NFC interface.

Operating Environment:

Item	Recommended System Requirements
OS	Android 5.1.1 or higher
CPU	Snapdragon 800 or equivalent or higher
Resolution	1280x720 dots or more
NFC	Reader, writer
GPS	Optional

Note of Available Android Device:

When using Sushi Sensor App for ATEX intrinsically safe explosion devices, Android device must comply with the following.

- When using NFC link in a non-hazardous area, the maximum magnetic field strength generated by the Android device is 18 A/m (r.m.s.) or less (Compliant with ISO / IEC 14443).
- When using NFC link in a hazardous area, only Android device confirmed by Yokogawa Electric Corporation can be used.
- If additional information and approvals for Android device are required, contact a Yokogawa representative.

9.3 Model and Suffix Codes

Model	Suffix Codes	Description
XS770A *1	Wireless Vibration Sensor
---	-A	Always A
Area	2	EU
	4	Southeast Asia
Type	K2	Intrinsically Safe for ATEX, II 3 G Ex ic IIB T4 Gc
---	-A	Always A
Housing material	1	Plastic, Stainless steel
Power supply	C	Battery powered including battery
---	A	Always A

*1: A hexagon socket set screw to mount this product is included.

9.4 Optional Accessories

Item	Part Number	Description
Magnetic holder	F9096DA	Magnet for mounting (M6 female screw)

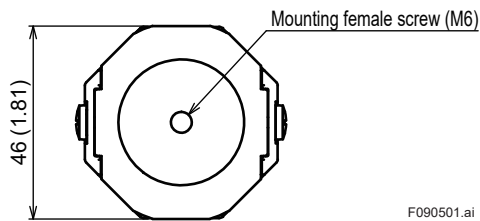
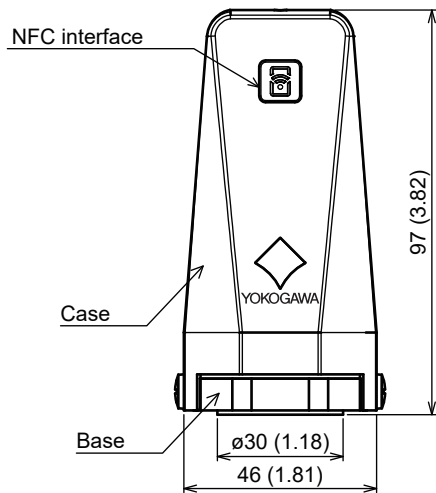
Model	Suffix Codes	Description
XS70BT *1	Lithium battery
Battery type	-A	Dedicated battery for XS770A
---	A	Always A
Number of Unit	-C004	4 units
	-C012	12 units

*1: The XS70BT is a set of a dedicated product (model: LS14500 C5SY) with battery connectors attached to SAFT battery.

9.5 Dimensions

- Main unit

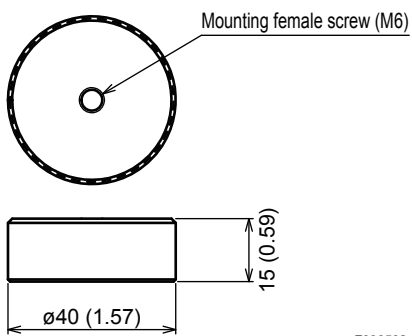
Unit: mm (approx. inch)



F090501.ai

- Magnetic holder
Part No.: F9096DA

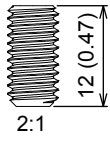
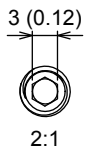
Unit: mm (approx. inch)



F090502.ai

● Hexagon socket set screw (M6)

Unit: mm (approx. inch)



F090503.ai

Revision Information

Title : XS770A Wireless Vibration Sensor Functions
Manual No. : IM 01W06E01-11EN

Edition	Date	Page	Revised Item
1st	March, 2019	—	New issue
2nd	Aug. 2019	—	Add "Area code: 4" to Chapter 9