



bluematic

BLUEMATIC TECHNOLOGY

BLUEMATIC
WWW.BLUEMATIC.CZ

BLUEMATIC A.S.
LIPOVÁ 1789/9
370 05 ČESKÉ BUDĚJOVICE

INFO@BLUEMATIC.CZ





GATEWAY LoRa WAN

blumatic



Basic Description:

- For wireless communication with sensors.
- Input voltage 220V.
- Internet connector RJ45F, DHCP klient.
- Internet backup: GSM 3G, 4G LTE.
- Proportions: 15cm x 20 cm x 6,5 cm
- CE certificate
- Made in Czech Republic.



TEHUM 2.0

bluematic



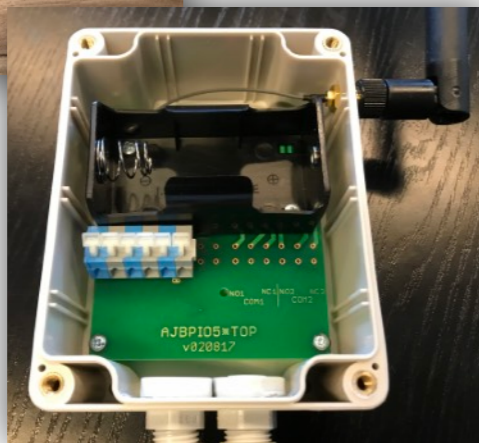
Basic Description:

- Temperature and relative humidity.
- Battery with life up to 5 years.
- Suitable for indoor use.

Basic Technical Specifications:

- Temperature: from -35°C to 60°C . Accuracy $\pm 0.3^{\circ}\text{C}$
- Humidity: from 0% to 100%. Accuracy $\pm 2\%$
- Transmit power: 25mW
- Range in open terrain: Up to 8km
- Power supply: 3.6 V battery size D, 19 Ah.
- Degree of protection: IP 65 with UV protection.
- The possibility of storing data into the internal memory of the sensor and their subsequent export.
- Status LED on the board.
- Reset from the network server.
- Proportions: 8,1cm x 7,8cm x 5,5cm
- Weight: 200g.



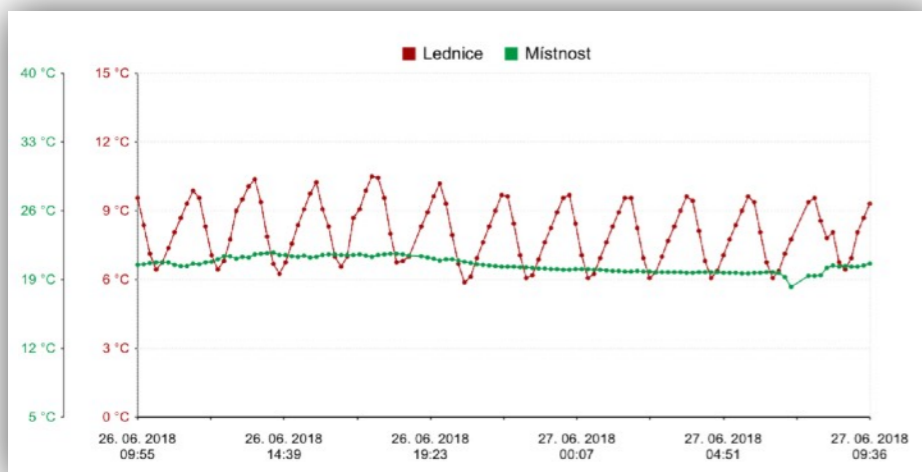


Základní popis:

- Určeno pro měření teploty v lednicích, chladících boxech, nádržích, místnostech.

Technické specifikace:

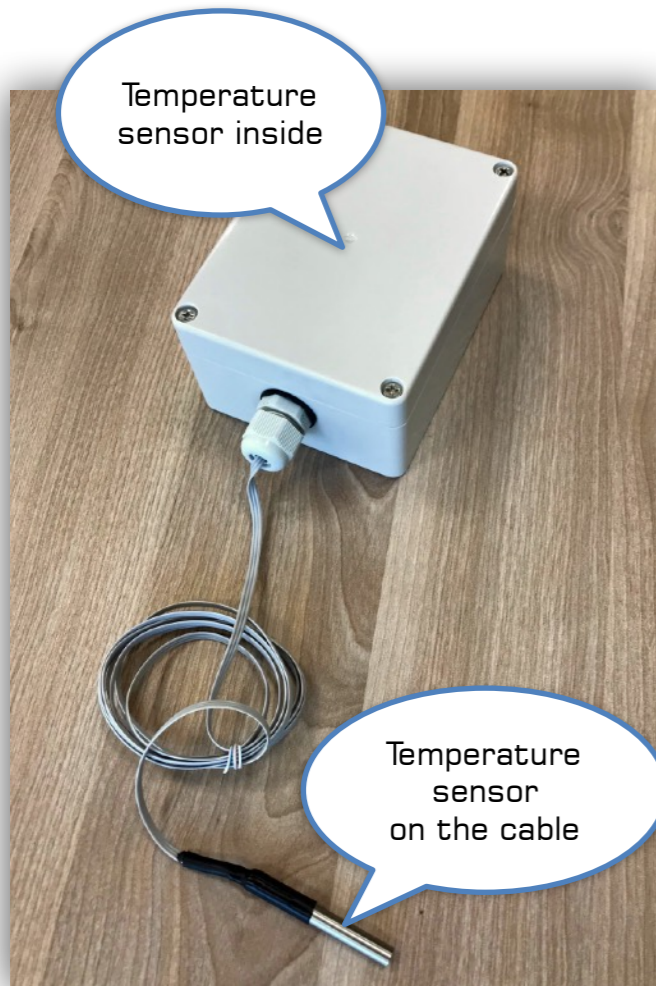
- Rozsah měřených teplot: -35°C až 60°C . Možnost kalibrace v akreditované laboratoři.
- Napájení: baterie velikost "D", nebo 220V
- Osazení: 1 až 4 vstupy pro teploměr.
- Vstup 4 je navíc možné rozšířit o 10bitové analogové měření a to buď jako vstup 0 - 20mA nebo jako vstup 0 - 10VDC u VDC je nutné externí napájení.
- Možnost osazení externí anténou.
- Teploměry na plochém, nebo kulatém kabelu.
- Volitelně výstup který je ovládán pomocí bistabilního relé a může automaticky reagovat na změnu jakéhokoliv vstupu 1 až 4.





TWO TEMP

blumatic



Basic Description:

- Two temperature.
- Battery with life up to 5 years.
- Suitable for indoor use.

Basic Technical Specifications:

- Temperature: from -35°C to 125°C . Temperature Accuracy $\pm 0.5^{\circ}\text{C}$
- Transmit power: 25mW
- Range in open terrain: Up to 8 km
- Power supply: 3.6 V battery size D, 19 Ah,
- Degree of protection: IP 65 with UV protection
- Proportions: 11cm x 9cm x 5cm
- Cable length: 150cm
- Weight: 230g



METEO

bluematic

Basic Description:

- Temperature, relative humidity and pressure.
- Power supply: Battery with life up to 5 years.
- Suitable for outdoor use.

Basic Technical Specifications:

- Pressure (Absolute): 300 – 1100 hPa \pm 1%
- Humidity: 0 to 100% rel, \pm 3%
- Temperature: -40 to 60°C, \pm 1°C
- Transmit power: 25mW
- Range in open terrain: up to 8km
- Power supply: 3.6 V battery size D, 19 Ah.
- UV protection.
- Proportions: 19 cm x 11 cm
- Weight 200g.





METEO PLUS

bluematic

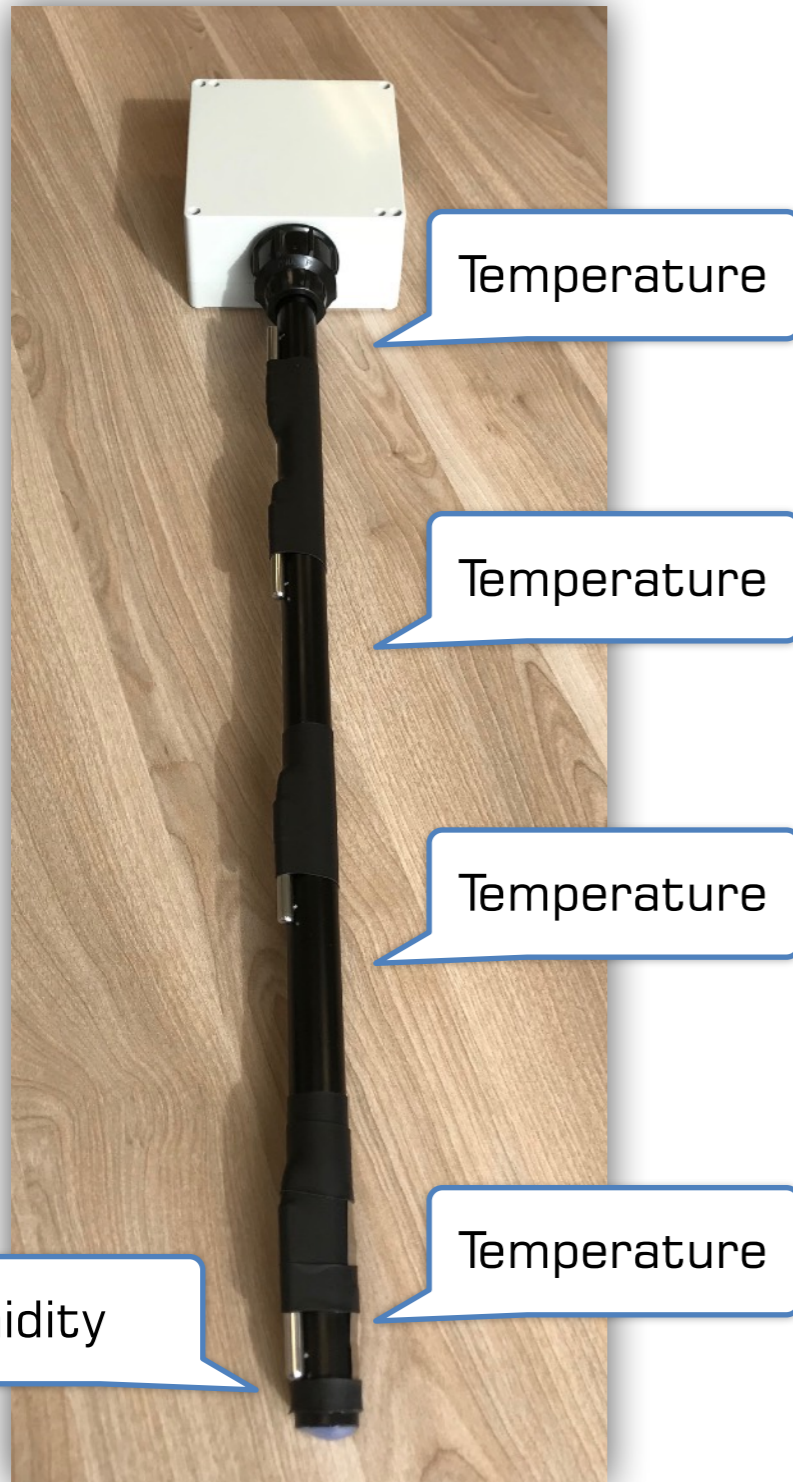


Basic Description:

- Temperature, relative humidity and pressure.
- Anemometr.
- Power supply: Battery with life up to 5 years.
- Determined for outdoor use.

Basic Technical Specifications:

- Temperature: from -35°C to 60°C .
Temperature Accuracy $\pm 0.5^{\circ}\text{C}$
- Relative humidity: from 0% to 100%.
Accuracy $\pm 3\%$
- Transmit power: 25mW
- Range in open terrain: up to 8km
- Power supply: 3.6 V battery size D, 19 Ah.
- UV protection

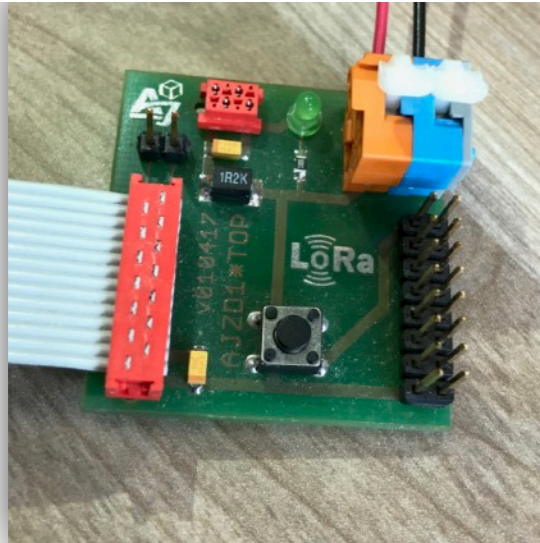


Basic Description:

- Four temperature, one relative humidity.
- Power supply: Battery with life up to 5 years.
- Outdoor use.

Basic Technical Specifications:

- Temperature: from -35°C to 60°C .
Temperature Accuracy $\pm 0.5^{\circ}\text{C}$
- Relative humidity: from 0% to 100%.
Accuracy $\pm 3\%$
- Power supply: 2 x 3.6 V battery size D, 19 Ah.
- UV protection.
- Proportions: Length: 50 cm
- Weight 360g.



Basic Description:

It is suitable for students, prototyping and for enthusiasts. Can be programmed in Arduino IDE.

- 1x programmable LoRa 868MHz modem with ATmega 328p microchip
- 1x PCB with IO PIN header

Basic Technical Specifications:

- Power voltage: 3,6V
- Communications:
 - o I2C bus
 - o Digital I/O
 - o Serial link (RX/TX)

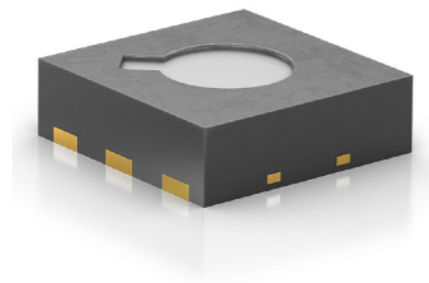


Environmental Sensing:

- Concentration CO₂,
- Total VOC (Volatile organic compounds)
- Temperature and relative humidity

Basic Technical Specifications:

- CO₂ concentration: from 0 ppm to 60 000 ppm accuracy 15% of measured value
- Total VOC: from 400 ppm to 60 000 ppm
- CO₂ and VOC operating RH: 10% to 85%
- Temperature: from -35 ° C to 60 ° C. Accuracy ± 0.3 ° C
- Humidity: from 0% to 100%. Accuracy ± 2 %
- Power supply: 3.6 V battery
- UV protection.





SMART ELECTRICITY METER

blumatic



Basic Technical Specifications:

- Interface: Serial line (RS232, RS485)



VOLATILE ORGANIC COMPOUNDS

bluematic

- People spend 90% of their time indoors where concentrations of gaseous pollutants are significantly higher than outdoors.
- The wide-spread use of new products and building materials, as well as improved insulation for energy efficiency, has resulted in increased concentrations of volatile organic compounds (VOCs).
- From paints and solvents, carpets and furniture, and cleaning agents, and are also emitted by humans.
- Negative impact on well being, comfort, and cognitive abilities.
- Reduced by regular ventilation, air purification and removal of strong VOC sources.





VOLATILE ORGANIC COMPOUNDS

bluematic

Typical VOC Sources	Compound Class	Example Compounds
Cleaning agents	Aliphatic hydrocarbons, organochlorides	Tetrachloroethylene
Solvents	Aliphatic and aromatic hydrocarbons	Heptane, decane, toluene, xylene
Cosmetics	Terpenes, ketones	Eucalyptol, limonene
Consumer products	Terpenes, aromatic hydrocarbons	Limonene, α -Pinene, toluene
Carpets and flooring	Esters, aliphatic and aromatic hydrocarbons	Butylacetate, heptane
Paints	Alcohols, aldehydes	Isobutanol
Human occupants		Acetone, methanol, ethanol



CENOVÁ NABÍDKA

bluematic

Název	Měřené hodnoty	Cena za kus (2-10 ks)
DIO5	2 x Teplota (plochý kabel)	3800Kč
TEHUM	Teplota, Vlhkost	2100Kč
BATT	Baterie	350Kč
	Kalibrace	900Kč
	Celkem	





CENY MEDICAL

bluematic

Položka	Popis	Umístění	Koncová cena	Cena 2 - 100 ks	Cena nad 100 ks
D105	Základní modem s držákem baterie v krabičce, vnitřní anténa	Indoor	4400Kč	3000Kč	2600Kč
Svorka pro teploměr			100Kč	100Kč	100Kč
Teploměr s kulatým kabelem			70Kč	60Kč	60Kč
Teploměr s plochým kabelem			300Kč	300Kč	270Kč





CONTACT

bluematic

Jan Dolejší

jan.dolejsi@bluematic.cz

420 775 123 074

